

KANSAI GAIDAI

UNIVERSITY
JAPAN



ASIAN STUDIES PROGRAM
FACT SHEET

2022 - 2023

ASIAN STUDIES PROGRAM

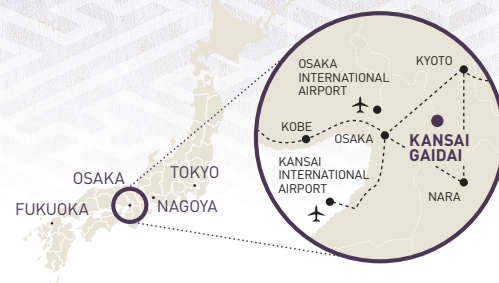
Kansai Gaidai University

Established in 1972, the Asian Studies Program today annually welcomes about 750 competitively selected students who represent about 40 countries and regions.

SPECIAL FEATURES

01 | Superb Location

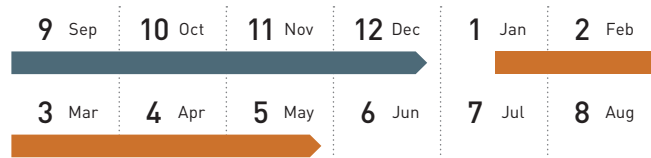
Kansai Gaidai is located in the city of Hirakata in Osaka prefecture. Located midway between Osaka, Japan's second largest metropolis, and Kyoto, the ancient capital of Japan (both cities accessible by train within 30 minutes), Kansai Gaidai's campus is in the commercial and cultural heart of Japan. It is an excellent starting point to explore Japan.



02 | Academic Calendar

The Asian Studies Program follows a typical academic calendar of major overseas institutions in the northern hemisphere:

■ Fall Semester ■ Spring Semester



03 | 70+ Courses Offered in English

Course Offerings



In addition to Japanese language courses, a wide variety of content-based courses from social sciences to business is available in English providing the deeper understanding of Japan and Asia from many different perspectives.

Mandatory

Japanese Language courses
Level 1 to 8

Elective

Content-based courses
Studio Art courses

04 | Internship Opportunities (Only for Spring participants)

Real life experience in Japanese business firms and local schools is available in the Asian Studies Program. Exchange students have an opportunity to experience and learn first-hand about the Japanese work environment.

[Host Companies, Schools, and Governmental Offices]

- AIG Japan Holdings K.K.
- Nippon Express Co., Ltd.
- Hirakata Foundation for Culture and International Exchange
- KCJ GROUP INC. (KidZania)
- The Royal Hotel, Ltd.
- The American Chamber of Commerce in Japan Kansai Chapter
- Kubota Corporation
- Hirano Elementary School
- Hirakata High School
- KYOCERA Document Solutions Inc.

The above internship sites are some of many companies who have accommodated our interns and are subject to change without notice.



05 | Housing

International students have two types of housing arrangements:

Housing Information



Resident Hall | GLOBAL COMMONS 結 - YUI -

- 651 Rooms (50% Int'l students)
- All single rooms
- Kitchen facilities available



HOMESTAY

- 1 Student per family
- 2 Meals included
- Commuting within an hour



TUITION & FEES PER SEMESTER

| Category | Amount |
|---|--|
| Tuition | Waived by exchange agreement |
| Homestay* (2 meals/day included) | JPY 320,000 (Approx. USD2,910) |
| GLOBAL COMMONS 結-YUI* International Student Residence (kitchen facility available) | JPY 230,000 (Approx. USD2,090) Reservation Fee JPY 2,000 (Non-refundable) Security Deposit JPY 30,000 (Refundable) |
| General Deposit (Refundable) | JPY 10,000 |
| International Student Fee (Mandatory) | JPY 10,000 |
| Liability Insurance and Medical Assistance Fee (Mandatory) | JPY 2,000 |

*Waived for students from institutions, which have full exchange agreements with Kansai Gaidai. [USD1=JPY110]

APPLICATION INFORMATION

❖ NOMINATION & APPLICATION PERIOD

For Fall Semester: January 10 – May 15

For Spring Semester: August 1 – November 1

Students applying as an exchange student must be nominated from exchange coordinators at our affiliated institutions.

❖ SEMESTER DATES

| | 2022 Fall | 2023 Spring |
|----------------------|-------------------|----------------|
| Arrival Dates | August 19, 20, 22 | January 17, 18 |
| Orientation | August 23-26 | January 19-24 |
| First Day of Classes | August 29 | January 25 |
| Last Day of Classes | December 12 | May 19 |
| Final Examinations | December 13-17 | May 22-26 |

❖ REQUIRED APPLICATION DOCUMENTS

User ID and password for GAIDAI-Link will be issued to students upon receipt of the nomination message from their home institutions.

| Item | Note |
|---|---|
| On-line Application | Must be Completed on GAIDAI-Link |
| Medical Information Form (Download Form from GAIDAI-Link) | Upload to Box |
| Identification Photograph (Passport type identification photo, full face and neutral background) | Upload photo in jpg. file to Box |
| Official Academic Transcript | Upload to Box |
| Two Recommendation Letters from Professor/ Instructor of University level (Download Form from GAIDAI-Link) | Accepted by E-mail directly from your professor / instructor |
| Japanese Instructor's Reference Form from Professor/Instructor of University level* (Download Form from GAIDAI-Link) | Accepted by E-mail directly from your professor/ instructor (Counted as one of the required two recommendation letters but the other recommendation letter should be from a different professor) |
| Passport Copy | Upload to Box |

* only applicable if studied Japanese before.

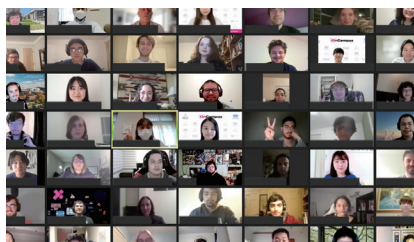


NEW ONLINE OPPORTUNITIES

ASP HOME-BASED PROGRAM

(ONLINE ASP COURSES)

The online courses named "ASP Home-Based Program" has been launched to provide students from all over the world with an opportunity to learn the Japanese language and various aspects of Japan and Asia. In the last three semesters, this new program has been very successful by attracting more than 1,000 students who enrolled in one or two courses from over 30 countries and regions. We will continue to offer online instructions for the upcoming semesters as well.



ONLINE SUMMER PROGRAM

The summer program provides full of wonderful experiences for remote students during June and July. The program includes Japanese language and selected cross-cultural courses on Japan and Asia. All courses are taught by experienced faculty members and therefore will be an excellent opportunity to start or enhance your Japanese language proficiency and/or develop a strong foundation to explore Japan and Asia. Courses are offered in combination of synchronous and asynchronous formats.



INTERCULTURAL ENGAGEMENT PROGRAM

(IEP)

A whole new exchange initiative named IEP has been established in 2020, for the purpose of keeping students of KGU and partner institutions closely connected throughout the world. The IEP is a student-led program that promotes interactions on a virtual platform and team leaders comprised of both international and local KGU students organize various events where students can meet and make new friends, find out more about Japanese culture, and learn about each other.

Official Instagram: @iep_kansaidai



ABOUT THE UNIVERSITY



1. Founded in 1945
2. Located in Osaka, Japan
3. Approx. 12,000 students
4. More than 1,900 students study overseas annually
5. Over 750 international students come to study at KGU annually
6. 393 partner institutions in 55 countries/regions.

TWO CAMPUSES

Each campus is walking distance approx. 15 minutes.



Nakamiya Campus



Gotenyama Campus Global Town



ASIAN
STUDIES
PROGRAM

<https://www.kansaidai.ac.jp/asp/>

Center for International Education

16-1 Nakamiyahigashino-cho, Hirakata City, Osaka 573-1001 Japan

E-mail: kgu-in03@kansaidai.ac.jp Telephone: 81+ 72-805-2831