

STUDY at LILLE UNIVERSITY



Université
de Lille

www.univ-lille.fr



1.



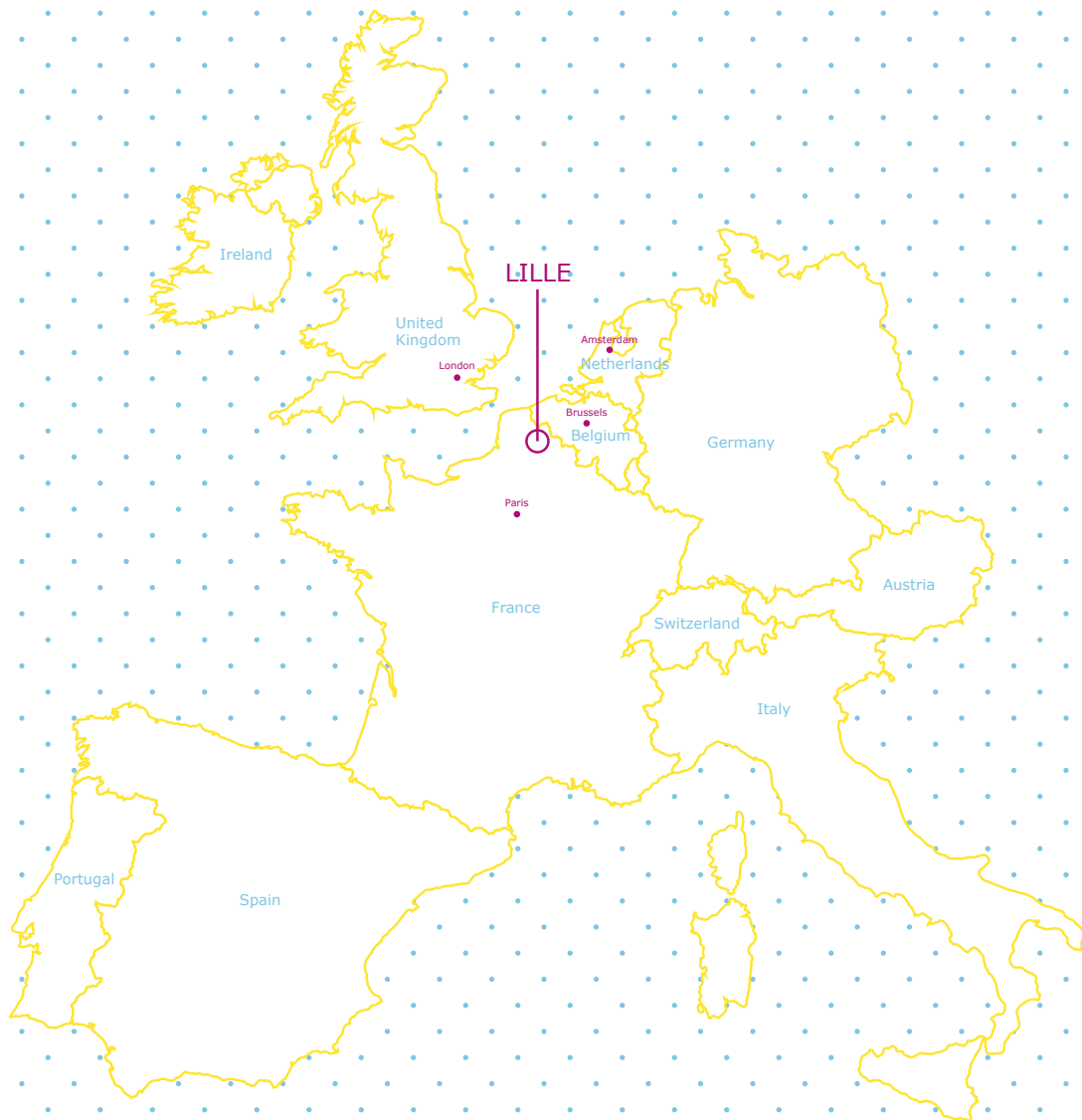
2.



3.



4.



1. Shangri-La Tulips sculpture by Yayoi Kusama beside Lille Europe railway station
2. The Belfry of the town hall
3. Lille downtown, a street next to the "Grand'place"
4. The "Place aux oignons", Lille old town

LILLE UNIVERSITY • • • • • • • • • • 06

•
IN AND AROUND LILLE • • • • • • • • • • 08

•
CAMPUS LIFE &
STUDENT SERVICES • • • • • • • • • • 12

•
RESEARCH AT LILLE UNIVERSITY • • • • • 22

•
HIGHER EDUCATION IN FRANCE • • • • • 28

•
GRADING SCALE AND ACADEMIC
CALENDAR • • • • • • • • • • • • • • 31

•
DEGREE PROGRAMMES
IN ENGLISH • • • • • • • • • • • • • • 32

•
DEGREE PROGRAMMES
IN FRENCH • • • • • • • • • • • • • • 34

•
ADMISSIONS • • • • • • • • • • • • • • 47

•
INTERNATIONAL POLICY • • • • • • • • • • 49

•
TESTIMONIES • • • • • • • • • • • • • • 50

•
LEARN MORE • • • • • • • • • • • • • • 52

Welcome

The city of Lille is located in the triangle between London, Paris and Brussels and offers a truly European experience to all international students.

Among our 67,127 students, 7,963 come from outside of France and have already made the choice to come and study at Lille University!

Why have so many students taken this decision?

Maybe because Lille University is a comprehensive university that covers 13 fields of study (architecture, law, economics and management, human and social sciences, engineering, sports, medicine, life sciences, science and technology, arts and literature, environmental sciences, languages). Undoubtedly, you will be able to find the academic programme you are looking for. Our programmes are adapted for today's business, society and world. Moreover, you can attend courses taught in English while learning French at the same time.

Or maybe because many of our faculties are located either on wide, green campuses with all facilities close at hand or in the city centre of Lille. On our different campuses, you will find sports facilities, student cafeterias, student clubs, halls of residence, cultural centres, cinemas... in sum, pleasant places for living and studying.

Or maybe because Lille University has state-of-the-art science laboratories and promotes innovative education through our Learning Centres. In Lille, you will learn to develop your critical skills, which is of key importance for broadening your knowledge.

Or maybe for all of these reasons!

So please take the time to have a look at this booklet and discover the wonderful benefits available to students studying at Lille University.

Please come and join us and make the most of your stay.



LILLE UNIVERSITY

Lille University is the result of the common desire of the three universities of Lille to develop a leading European University, recognized worldwide for its research, the excellence of its teaching and its innovation in lifelong training.

Today, Lille University is working toward becoming one of the top 10 French universities and among the top 50 European higher education institutions by 2025.

Degree programmes take place over a period of 3 years for the Bachelor's degree and 2 years (1+1) for the Master's degree, with a selection process for admission to the second year. Most degrees are taught in French and cover a wide range of fields of study in science, technology, engineering, law, health, economics, management, languages, and human and social sciences. Moreover, 24 degrees are fully taught in English! The University offers language courses for international students, so you can learn French at your home university or here in Lille to meet the admission requirements (B2 level*) or just to improve your language skills.

We are looking forward to welcoming you very soon!

*according to the Common European Framework of Reference for Languages

Facts & Figures

- 67,127 students, 12% are international students from 145 different countries.
- 2,000 PhD students and 339 thesis defenses per year.
- 3,300 academic staff.
- Cooperation and Exchange agreements with Higher Education institutions in more than 70 countries.
- 62 research units, 7 equipex ("Equipment of Excellence") and 5 labex ("Laboratory of Excellence") awarded by the French government.
- Each campus is a member of the Erasmus + Charter.
- "International Label" developed by Lille University and awarded by the European Commission.

(Lille University in facts & figures 2016)

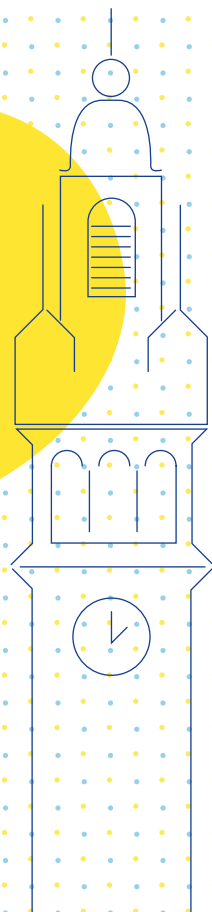
A little bit of History

Lille University has deep roots in the past. The first university was created in Douai in 1562 by the King of Spain. It only became French in 1712. At the end of the 18th century, the French Revolution and the subsequent regimes made it hard for the university to continue. The real rebirth of the university, in its present form, dates back to 1854 with the creation of the faculty of Science in Lille under the aegis of Louis Pasteur.

After the Second World War, the university underwent extensive development that led to the creation in 1967 of 3 universities: the University of Science & Technology, a vast green campus outside Lille in the city of Villeneuve d'Ascq, known as the "Cité Scientifique"; the University of Health & Law with various campuses in Lille; and the University of Human and Social Sciences, which was relocated in 1974 to a modern campus in Villeneuve d'Ascq known as "Pont de Bois".

In 2014, the three universities signed a partnership agreement to begin a merger process to create Lille University. The merger will take place in 2018.

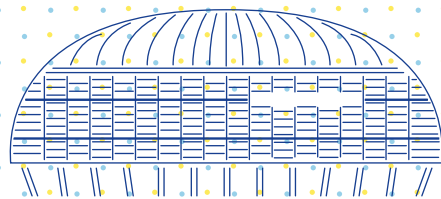
IN AND AROUND LILLE



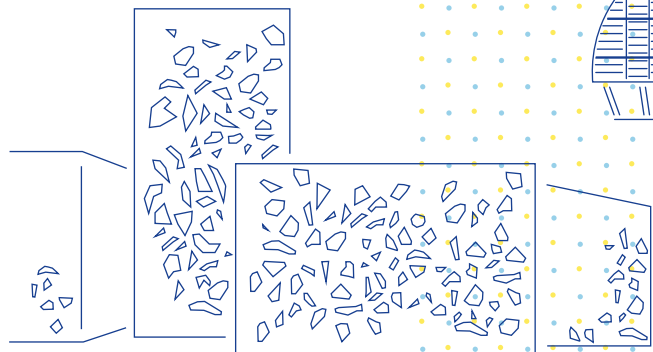
THE BELFRY



LE PALAIS DES BEAUX-ARTS



PIERRE MAUROY STADIUM



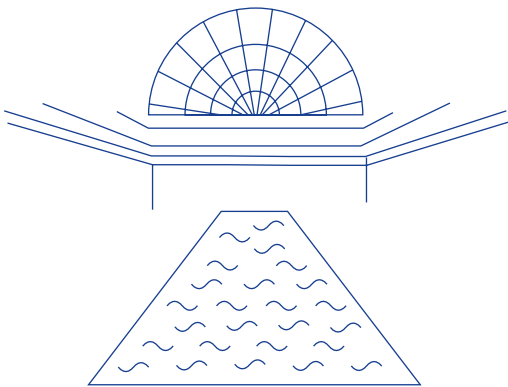
LAM

Location

The region is famous for its wonderful landscapes with its typical windmills, its cobblestone streets, the vast beaches of the Opal Coast, its countryside, and its Flemish architecture. Not only is the standard of teaching extremely high in the Hauts-de-France but the region is also great fun to live in.

The City and the Region are full of architectural treasures and great cultural institutions where nature has also its place. Memorials and remnants of its industrial past make Lille and its Region a must-see location. In Lille, you will discover a friendly atmosphere with typical French "Art de Vivre" and many traditional celebrations.

- Lille is the 4th largest metropolitan area in France after Paris, Lyon, and Marseille.
- Lille was the European cultural capital in 2004.
- Hauts-de-France has a population of 4 million inhabitants.
- The youngest population in France: 35% of the inhabitants are under 25.



LA PISCINE

What to do in and around Lille

In the centre of Lille, you can find a myriad of bars and clubs as well as cinemas which are clustered around the pedestrian area in the town centre. At some cinemas, such as the Majestic or the Métropole, you can see foreign films with French subtitles. There are also numerous concert halls in the Lille area which attract young audiences from Lille and the surrounding region.

Must-see places:

- "Le Vieux-Lille": The Old Town with the Citadel built by Vauban in 1671
- "La Piscine" de Roubaix: a beautiful museum of Arts and Industry in an Art Deco swimming pool!
- "Le Palais des Beaux-Arts", "le LAM" (Modern Art) : two excellent fine arts collections
- "Le Louvre-Lens": in the heart of the former mining area, this museum welcomes collections belonging to the famous Louvre Museum
- The four belfries of Lille, Loos, Armentières & Comines are listed as UNESCO heritage sites
- Général de Gaulle's home: the famous author of the Appeal of 18 June 1940 was born in Lille
- Wazemmes: a multicultural market
- Pierre Mauroy Stadium: Lille's brand new stadium for sport and cultural events

Important events:

"La grande Braderie": the largest flea market in Europe (early September);
Carnaval de Dunkerque, Paris-Roubaix (famous bicycle race)...

Cost of living

Living in France for a whole year will cost around 7,000 €. This sum largely depends on your accommodation: university residence hall or private flat. For scholarship opportunities for international students, you can consult the online grant search engine on the Campus France website.

To prepare your stay at Lille University, here is a cost estimate:

Tuition fees (free-movers & degree-seeking students only)	(fees for academic year 2016-2017)
Bachelor	184 €
Master	256 €
PhD	391 €
Health insurance (sécurité sociale)	215 €
Supplementary health insurance (mutuelle)	234 €
Accommodation	395 €/month
Food:	
Meal at university restaurant	3.25 €
Baguette (bread)	1.10 €
Coffee	1.50 €
Sandwich	3.60 €
Books	150 €
Metro/Bus	Monthly pass 28 € Single fare ticket 1.60 €
Mobile phone	From 2 to 30 €/month
Internet	Free wifi on campus
Leisure:	
Cinema	7.50 € (student price)
Swimming pool	4 €
Concert	10-35 €
Bowling	5 €
Travelling:	
Lille-Paris Train	20-55 €
Lille-Paris Bus	15-30 €
Lille-Brussels Train	17-40 €
Lille-London Train	50-80 €
Lille-Amsterdam Bus	17-30 €

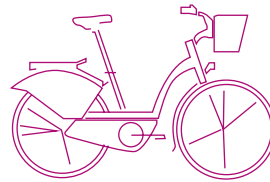
Transport

The 3 main campuses are located in Lille and Villeneuve d'Ascq with some faculties in Loos, Roubaix and Tourcoing reachable by metro or by bus.

The VAL (light automated vehicle) system is a driverless metro in and around Lille. This "automatic metro" was invented in the early 1980s by Professor Gabillard, a researcher from Lille University.

The metro forms part of a mixed mode public transport system, combined with buses and trams operated by Transpole and covering the Lille metropolitan area. There are 60 stations, going as far as the Belgian border. The metro operates from 5am until midnight, with metros every 1.5-4 minutes (1 min during rush hour), and every 6-8 minutes early mornings and evenings. On Sundays they run every 4-6 minutes.

The single fare costs 1.60 €. Students can obtain reduced transport fares for their daily journeys in and around the city or in the region.

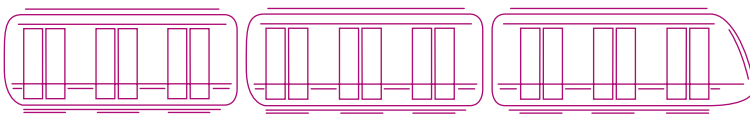


If you prefer to use a bicycle, you can buy an annual subscription to the V'Lille programme.

If you want to travel in France, the most convenient way is the high speed train TGV.

- Lille - Paris: 1 hour
- Lille - Brussels: 36 minutes
- Lille - Lyon: 3 hours
- Lille - London: 1 hour 40

Students can get a discount card.





The graphic features a white background with a grid of small blue and yellow dots. A large yellow hexagon is tilted, containing line-art icons of a violin, a triangle, and a trumpet. A large blue hexagon is also tilted, partially overlapping the yellow one. The text 'CAMPUS LIFE & STUDENT SERVICES' is written in a bold, purple, sans-serif font across the center. At the bottom, a red circle contains line-art icons of a badminton racket, a soccer ball, a volleyball, and a football.

CAMPUS LIFE & STUDENT SERVICES

3 MAIN CAMPUSES

Lille University has three main campuses:

- The Campus of Health & Law with offices and faculties in the cities of Lille, Roubaix and Ronchin
- The Campus of Human & Social Sciences with offices and faculties in Villeneuve d'Ascq - Pont de Bois and in Roubaix-Tourcoing
- The Campus of Science & Technology with offices and faculties in Villeneuve d'Ascq "Cité Scientifique", in the city of Lille and one research department on the Opal Coast



Events

Welcome Days:

The "Journées d'Immersion dans la Vie Étudiante" (JIVÉ) offer many activities related to student life along with different meetings in the faculties that will help you to discover the services available at the university including: accommodation, scholarships, student social security, health services, international mobility, transport...

Lille University works with its partners to make its students feel as welcome as possible during the JIVÉ events. Each student can participate in a host of activities including: a rally to explore the three campuses and the surrounding area, art workshops, sporting events, concerts and outdoor cinema.

1-15 September 2016

Mix'Cité Festival:

Each year, Lille University organizes its own festival called Mix'cité with concerts, games, sports, exhibitions... It is a great opportunity to bring together the community of students and staff and to open the campus to local residents. This event is the finale of the JIVÉ.

15 September 2016

International Student Week:

International students and international themes have the place of honor for one week during the autumn semester! With conferences, workshops, events, concerts and shows, the aim is to promote international mobility. An official reception at the Gare Saint Sauveur hosted by the city of Lille kicks off this special week.

14-17 november 2016

ACCOMMODATION

Lille is the third largest student city in France after Paris and Lyon, so there is a high demand for accommodation. Both individual and shared housing are available. Don't leave it until the last minute! Here are some options:

University Halls of Residence:

University residence halls are a popular option among students. They often offer small private rooms with a bathroom and kitchenette. In some residence halls, kitchens or bathrooms are shared. Identify the residence halls closest to your host institution. For exchange students, contact the International Relations department at your home university. A quota of rooms is reserved for you.

Reeflex:

Reeflex is a new residence hall of 368 rooms intended for exchange students (Campus of Science & Technology), international researchers and trainees. It is a great place to meet in a friendly atmosphere, with various services such as a launderette, welcome packages (bedding and kitchen utensils),

cleaning, specific services for international researchers and a childcare centre for the children of university staff and students. The residence was built according to high environmental quality standards and respects the standards for sustainable development (waste recycling, low energy consumption, bicycle use).



Flat-Sharing:

Sharing allows you to live in a home with other people and thus split the cost of the rental. Many ads can be found on specialized websites.

Purpose-Built Residences:

These offer the advantage of providing a number of services: reception, laundry, cafeteria, common room, etc.

Individual Studios:

Renting an individual flat can be done either directly from an individual or through an agency to which you will have to pay non-refundable agency fees.

CAFETERIAS

There are 19 university cafeterias (called "RU") managed by the CROUS in the Hauts-de-France Region. Open at lunchtime and in the evening, from Monday to Friday, the RU offers a wide range of high quality meals. You can choose either a traditional restaurant meal (starter, main course, and 2 sides) or a cafeteria meal with a choice of sandwiches, fast food and brasserie dishes.

The "Cabaret Sully" (Campus of Science & Technology), "La Basoche" (Campus of Health & Law) and "Le Florès Café" (Campus of Human & Social Sciences) serve meals in a warm and friendly atmosphere. Special events are regularly organised (cinema, concerts, theatre, exhibitions...).

STUDENT SERVICES

Career Service:

This service provides professional orientation and assistance for job/internship searches. Seminars are organised throughout the year to help students with CV and application letters. You can also find a large area reserved for resources and information on careers and jobs. Do you want to create your own start-up? The Hubhouse service can inform you, give you advice and assistance and can help you to benefit from its professional network.

Services for students with disabilities:

If you have a disability or a serious illness, the Student Life Office can help you in many ways (help with administrative procedures, with the organisation of courses, of exams, etc). Don't hesitate to contact this office before your arrival.

Social and Psychological Counselling:

If you need to talk to someone, you can meet a counsellor. This service is free and confidential. The counsellor is a professional who can give you advice and direct you to specific services to find a solution.



SPORT

The SUAPS is a special department which offers numerous practice slots for many different sports. These sport activities aim at contributing to students' health and well-being, encouraging the acquisition of autonomy, developing intercultural exchanges, and helping students enter the academic and professional world. There are two types of sporting activities: training leading to a qualification and personal training for general health and well-being. Every student can enroll on each campus whatever their playing standard.

In addition to regular practice, you can participate in many events organised by SUAPS all year long: tournaments, theme days and evenings, etc.



MUSIC

Do you play violin, clarinet or trumpet? Fancy joining a symphony orchestra? Lille University Orchestra consists of amateur musicians, all of whom are students or lecturers at Lille's universities and business schools. It welcomes many international students every year.

CAMPUS HEALTH & LAW

Libraries - BU

The "Bibliothèque Universitaire" (the BU) allows you to borrow documents and provides access to the services offered by the library. Registration is free for students and staff at Lille University. If you need an article, a book or a thesis that is not in the BU of Lille University, the library will offer to acquire them for you.

Moreover, students with disabilities are comfortably accommodated. A dozen "disabled" parking spaces are available in the underground parking lot of the Pole Moulins. A public library catalogue and a check-out desk adapted for patrons with disabilities are available on the ground floor, as well as a specific computer in the computer room.

The Common Documentation Service is comprised by 3 BU: Health (Medical research centre, medical training centre and Pharmacy) and the associated libraries and documentation centres.



Languages

Diplomas in French Language:

French language courses are taught on the Campus of Human & Social Sciences (see page 17) and the Campus of Science & Technology (see page 22)

Culture

The Culture Department, known as L'Antre-2, is open to all students and staff of the Health & Law Campus, offering both resources and logistical support. It has three main missions: encouraging awareness and understanding of cultural and artistic practices, programming and broadcasting shows at the l'Antre-2 theatre space and offering support to students participating in the university's various cultural projects.

It offers weekly artistic expression workshops as well as training courses at weekends: Theatre, Dance, Visual Arts, Music, Photography, Book Club ...as well as prestigious events such as the "Atelier Lyrique" (opera), "Comédie Française" (theatre)...L'Antre 2 also works in partnership with the other Lille-based Universities, the cities of Lille and Roubaix and cultural institutions from all over the Euro region.

Events

Student Club Day:

This day is organized for all students of Lille University, Health & Law. It is an opportunity to meet other students, members of associations and clubs, which will help you to discover different artistic and sport disciplines and get involved in student life, sport and culture.

CAMPUS HUMAN & SOCIAL SCIENCES

Library

The libraries at Lille University, Human & Social Sciences include a central library and 19 associated branch libraries (located in academic departments and laboratories). Together the collection numbers over a million books, which can be borrowed or consulted on site, and the documentation service provides access to a significant collection of online resources (journals and databases, etc.).

The central library offers a varied range of spaces designed for working individually or in groups (around 1,000 workstations), unlimited access to almost 160,000 documents, and a reading area and cultural events space for relaxation and leisure. It also boasts ideal research facilities, with a dedicated space for Master's and PhD students and faculty personnel. Branch libraries play an important complementary role. For some users, they are the first point of call for books, while for others they serve as important research libraries.

The central library holds Lille University's historic collections comprising documents dating from the 12th century to 1810, as well as scientific archives.

Libraries play a vital role in helping students to succeed and in supporting research.

Student services

International Relations Department

IT Suite:

The International Relations department provides an IT suite for students to use. You can also use this space for group work.

Language Resources Centre (CRL):

The Language Resources Centre is specially designed for those learning languages as part of a guided self-study programme. It provides resources relevant to your coursework or self-study programmes in 23 different languages.

A team of support staff, tutors and lecturers is also on hand to help you. More than just a cultural meeting place, the centre offers films in their original language that you can watch with your friends. It's also a chance to chat with a tutor in the language of your choice, take part in any of the wide range of workshops on offer or just work on your own projects.

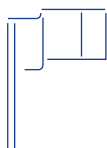
You can also sign up for teletandem and tandem sessions, a great way to learn languages autonomously. These sessions involve two students with different first languages who agree to meet regularly (via Skype or in person). Participants are thus able to explore a foreign language as well as learn about their partner's culture and way of life. They provide reciprocal support while learning each other's native language. Partners are free to choose:

- how often and where they meet
- the content of their discussions
- how to correct each other's mistakes

What better way to make international friends and learn to communicate with someone in another country, without having to leave your seat? For English, German and Dutch, a guided Tandem course is available for 3 credits.

Ulysse:

This international café maintains a warm, friendly ambiance. The team organises regular events, such as welcome days, buddy programmes, pot luck dinners, trips, exhibitions and concerts, etc.



French courses

The DEFI – Department of French as a Foreign Language – caters to all international, non-French-speaking students at Lille University, Human & Social Sciences. It teaches French with the aim of enabling students – whether beginning or advanced – to explore the wealth and beauty of the language and its culture, as well as the secrets of academic methodology.

All French as a Foreign Language (FLE) courses offered by the DEFI correspond to one of the six different levels (A1/A2/B1/B2/C1/C2) of the Common European Framework of Reference for Languages, and are grounded in the task-based communicative and intercultural approach.

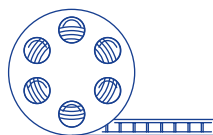
All international students take a course tailored to their particular linguistic requirements in French, which forms an integral part of their university degree (Bachelor's, Master's or PhD).

Students registered for the DEFI course have access to all university departments and services (university library, career and information services, CROUS [Regional Student Welfare Offices], etc.) and can take part in the full range of sporting, artistic and cultural activities (festivals, films, theatre, concerts, exhibitions, etc.) on offer at Lille University, Human & Social Sciences.

Student enrolled in Diploma of French Studies (DUEF) will be issued a study visa.

French–Dutch Network

In the framework of European cooperation the "Réseau franco-néerlandais" is working to strengthen the ties between the Netherlands and France in the area of higher education and research. This national network based at Lille University does so by organizing bilateral events (Young Talent, Franco-Dutch meeting days), by awarding scholarships (Éole, Prix d'Amsterdam) and by liaising daily between higher education and research establishments in both countries. Its partner office is housed by EP-Nuffic (Campus France's Dutch counterpart) in The Hague. The RFN is funded by the French Ministries of Foreign Affairs (MAEDI), Higher Education and Research (MENESR), the French Embassy in the Netherlands, the Dutch Embassy in France and Lille University.



Culture

"Le Kino" (Pont de Bois):

The only campus cinema with regular screenings, the Kino-Ciné is listed as an "Art et Essai" venue. It offers a selection of some of the best contemporary films in metropolitan Lille, including brand new releases as well as classic and cult cinema. It organises a wide range of special events involving directors, cinema critics and experts from other related fields. Student admission: 4.60 €

The venue is a multi-purpose 350-seat theatre that schedules a variety of events, including dance and music performances and productions performed by professional companies or run specifically for students.

"Les Trois Lacs" Exhibition Gallery (Pont De Bois):

The gallery features an eclectic mix of exhibition themes. This is a way of enabling visitors to understand and familiarise themselves with new artistic concepts and to gain an appreciation of art as both relevant and accessible. The gallery is open to the general public, whether students, teachers, art enthusiasts and connoisseurs, or just anyone interested in finding out more.

The exhibitions (around one per month) are open weekdays from 9am to 5pm and are free of charge.

"La Galerie Commune" Exhibition Gallery (Tourcoing):

This exhibition gallery is shared by ERSEP (Regional Plastic Arts College) in Tourcoing and the Plastic Arts department at Lille University, Human & Social Sciences, which are both located in Tourcoing. This gallery is dedicated to exhibiting contemporary plastic arts and serving as an educational tool for lecturers and students in the Plastic Arts department.

"Théâtre des Passerelles" (Pont de Bois):

A former lecture hall converted into a proper theatre in 1994, this is the ideal study venue for performing arts students. This professional-standard stage looks out onto 80 seats and also plays host to drama workshops as well as lectures, conferences and gatherings.

The Théâtre des Passerelles is also home to the bulk of the Festival Interuniversitaire du Spectacle Vivant (inter-university festival for live entertainment).

"Festival Interuniversitaire du Spectacle" (Pont de Bois):

Every year for more than 30 years, the Lille University, Human & Social Sciences has organised a unique festival that invites students from both France and abroad to come perform their own, original live entertainment.

Students taking part in the festival get the opportunity to perform in front of a large audience in real-life, professional conditions.

Student Associations and Initiatives

Lille University, Human & Social Sciences and its student associations offer a wide and diverse range of activities. These events are open to anyone on campus and are held regularly throughout the academic year:

- Concerts, shows, exhibitions, competitions (photography, film, theatre, etc.), inter-university contests and debates (debating societies, simulations, etc.), student newspaper, student radio, short film production, etc.
- Sport activities, sport week, etc.
- International development and humanitarian projects: cooperation and skill-sharing with countries in the Southern hemisphere, and raising awareness of the challenges facing society
- Activities on campus and in the local area (sustainable development projects, community parks (jardin-citoyen), awareness campaigns for schools, waste collection and recycling, etc.)

CAMPUS SCIENCE & TECHNOLOGY

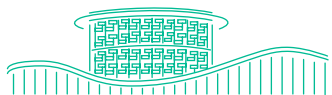
Watch our video "Choose Lille 1":

www.univ-lille1.fr/home

(english subtitles)

-

You can watch **Lille 1 web tv**
and listen to **Radio Campus**
(106.6 fm)



Library

The library at the centre of the campus has just been renovated to become a Centre for Learning and Innovation. It will open in Autumn 2016 with brand new equipment and facilities for students and staff but will also be open to companies, high schools and the general public. 220 m² will be dedicated to the promotion of innovation and 300 m² to experimentation. There will be 50 rooms for workshops and seminars, 2 lecture halls and 1 internet café.

The library collection includes 160,000 books, 60,000 theses and 660 subscriptions to various scientific journals. Enrolment at Lille University allows you complete access to the library and its resources. Library patrons can borrow up to 7 documents for two weeks. Many of the scientific journals are in digital form and available on-line via the central library server. You can also make any photocopies necessary for your work (in digital form), as well as carry out bibliographical research using the international databases.

The service BUMOBILE enables you to borrow books and other documents or extend your loan period via your smartphone/tablet. An inter-library lending service is also available for books not found in the central library. Each faculty also has its own decentralised library.

Xperium

Xperium is a brand new space for experimenting with innovation in research. This facility is designed for high school students but is also open to the university community. Students can discover the principles of current fundamental research, its results and its applications through participation in 7 different experiments.

Student services

Modern Languages Service:

On campus you can find a Modern Languages Service where you can study French, English, German and Spanish.

Languages are taught in two specific buildings: B5 and SUP/SUAIO. Two self-service language resource centres are available to students who want to improve their language skills or register for language assessments.

Student associations:

There are over 60 clubs and societies on the campus. Thanks to these associations, you can meet French students. Ask for the directory of clubs and societies ("annuaire des associations") when you arrive at Lille University.

Erasmus Student Network (ESN):

The ESN provides opportunities for cultural understanding and self-development under the principle of Students Helping Students (Buddy System, Welcome Days, cinema, parties, cultural events, sport, trips...).

Moodle:

On campus, there are several places where you can find a computer and wireless connections. When you enrol, a personal e-mail address is automatically issued. You will receive a weekly newsletter and then become an active member of the community of Lille University.

The Moodle platform will help you contact teachers and other students, find information about courses, obtain access to e-resources.

French courses

Exchange Students:

Exchange students can improve their French skills and their knowledge of French Culture thanks to a free French Course. This course enables them to earn 2 credits.

Diploma in French Language:

This programme is intended for students for whom French is a foreign language and who want to improve their French proficiency. DU FLE is a French programme based on innovative teaching methods, such as organizing groups according to French proficiency, thematic courses, learning through projects, French for academic purposes and the use of social networks. It aims at helping students to acquire the linguistic basics in French so that they can take academic courses at Lille University; i.e. achieving level B2 in order to begin a programme in hard sciences and achieving level C1 for a programme in human and social sciences.

Certification in French for foreigners:

If you wish to validate your level of French, you can take the DELF, the DALF or the TCF. These certifications are offered by the French Ministry of Education to validate your French language skills (reading, writing, speaking, and listening). Sessions are organized each year by the "Communauté d'Universités et d'Établissements Lille Nord de France".

Culture

The culture building is located at the very heart of the campus close to the Library and the Student House. You can have a coffee, visit the exhibitions, take part in cultural activities such as music, dance, theatre, photography... Conferences are organised all year long.

Opening hours: Monday till Thursday, 11am till 6pm/ Friday, 10am till 1.45pm

Every student can also receive a "Pass'Culture" to obtain free or reduced access to partner museums and cultural institutions.



Student house

This 700m² building is devoted to student life. It was created as a unique place for students and it is mostly managed by the students themselves. The Student House offers a reception hall, cafeteria, offices for clubs and societies, a multimedia room, a meeting room, and a conference room that hosts more than 60 activities each year. You can't miss it!

If you only have time for a snack, the miniR offers a wide choice of sandwiches, salads ... at unbeatable prices.



RESEARCH AT LILLE UNIVERSITY

Our strengths

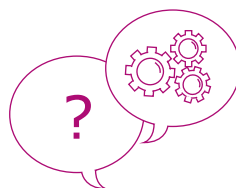
Lille's research units are as nationally and internationally renowned research actors in fields such as:

- Biology and Health (neuroscience, diabetes, cancer, inflammatory diseases, infectious diseases, etc.)
- Information and Communications Technology
- Mathematics
- Laser Physics
- Visual Studies
- Materials Chemistry and Ecological Chemistry
- Atmospheric Physics and Chemistry
- Biodiversity and the Environment
- Transport
- Sport Sciences
- Classical Humanities and Digital Humanities
- Human and Social Sciences, Cognitive Sciences
- Legal Studies and Political Studies
- Management Studies.

Nearly all areas of research are covered by Lille University.

5 laboratories of excellence (Labex) and 7 facilities of excellence (Equipex)

have been selected for funding under the framework of the "Plan d'Investissements d'Avenir". The integrated cancer research site "SIRICOncoLille" figures among the 8 French SIRICs selected by INCA, French research agency on Cancer. LICEND, the Lille Centre of Excellence for Neurodegenerative Diseases ranks among the 7 regional centres of excellence for neurodegenerative diseases labelled by AVIESAN (French National Alliance for Life Sciences and Health).



Lille University has developed a coherent group of research centres with world-renowned technological platforms. It is one of the leading national networks and some of its platforms are unique in Europe.

As part of industrial partnerships, these platforms are drivers that put the site at the highest international level and strengthen our research partnerships with socio-economic stakeholders.

Lille University is one of the Top 10 French universities* most involved in the European Horizon 2020 projects.

* in 2015

With more than 2,000 PhD students,

Lille University is associated with 6 graduate schools supported by the Lille Nord de France Graduate College in:

- Materials, Radiation and Environmental Sciences (ED SMRE)
- Sciences for Engineering (ED SPI)
- Human and Social Sciences (ED SHS)
- Biology and Health (ED BSL)
- Economic, Social, Development and Management Studies (ED SESAM)
- Legal, Political and Management Studies (ED SJPG)

Lille University

- **Is committed** to innovation in partnerships with industry and small and medium enterprises with the goal of providing solutions to new technological challenges.
- **Offers** high-standard technological platforms that promote experimentation with innovative technology and provide research services to meet the needs of businesses.
- **Promotes and supports** the creation of innovative businesses, particularly based on the findings of its research units.
- **Is involved** at the scientific and governance level in the 7 competitive clusters of the "Nord" and "Pas-de-Calais" districts. It contributes to the development of the 5 technology parks of the Lille metropolitan area.
- **Participates** in European research and innovation strategies as well as in national and regional strategies in the fields of energy efficiency, biology and health, nanotechnology, transport, innovative materials, ecological chemistry and more...



Our ambitions

Become one of the 50 leading European universities:

The 3 Lille universities and the 3 major research organizations (CNRS, INSERM, INRIA) have the scientific potential and the capacity to engineer lifelong training of a high calibre. The ongoing merger of Lille's universities is designed to help this capital grow and bring it up to the best European standard, thanks to its structural effect on the Lille metropolitan area and its driving effect on the entire region. The ambition of Lille University is to become one of the top 10 French universities and the top 50 European universities on the horizon of 2025.

Be a key player in socio-economic change:

Playing a major part in the implementation of the new model of economic and social development, based on research and innovation: such is the role of the university.

This goal is crucial for the future, and widely acknowledged in the socio-economic sphere and by local authorities, in a Eurometropolis in full economic evolution.



Play a key role in technological innovation:

Enriched by an energetic economic development, the presence of 7 competitiveness clusters in the Nord and Pas-de-Calais and numerous partnerships outside the regional and national boundaries, Lille University's researchers are participating more and more in technological and services innovation. The synergy between the research units, businesses and major research organizations creates an environment that is incentivising and favourable to partnerships, technology transfer and the creation of innovative businesses. Through its commitments Lille University actively supports socio-economic development with its major challenges for the future.

Key figures

6,300 Members of staff:

- 3,000 engineers, administrative staff and technicians
- 3,300 Professors and assistant professors

62 research units labelled by the Ministry of Research and Higher Education, CNRS, INSERM, INRA and INRIA

5 Laboratories of excellence:

- EGID *European Genomic Institute for Diabetes*
- DISTALZ *Development of Innovative Strategies for a Transdisciplinary approach to Alzheimer's*
- ParaFrap *French Alliance against Parasitic Diseases*
- CaPPA *Atmospheric physics and chemistry*
- CEMPI *European centre for mathematics, physics and their interactions*

7 Facilities of excellence:

- ImaginEx *BioMed Platform for high-speed screening microscopy and very-high-resolution analysis in the biomedical field*
- ExCELSIOR *Experimental centre for research into the properties of nanodevices in a wide spectrum from microwave to medium infra-red*
- IrDIVE *Platform of research and innovation in digital and interactive visual environments*
- LEAF *Laser processing platform for multi-functional flexible electronics*
- REALCAT *Integrated platform applied to high-speed screening of catalysts for biorefineries*
- LIGAN PM *Lille new-generation genome sequencing platform*
- FLUX *Fibre optics for high bitrates*

1 Integrated cancer research site:

- SIRIC OncoLille

1 Institute for energy transition:

- ITE IFMAS *Institut Français Des Matériaux Agro-Sourcés*

1 Institute of technological research:

- IRT Railenium *European Institute of Technical Research for the rail infrastructure*

1 Technology transfer acceleration company:

- SATT Nord



1

1. Lilliad Learning center Innovation on the campus of Science & Technology
2. Dance studies
3. SCAPS swimming pool on the campus of Health & Law



2



3



4



5

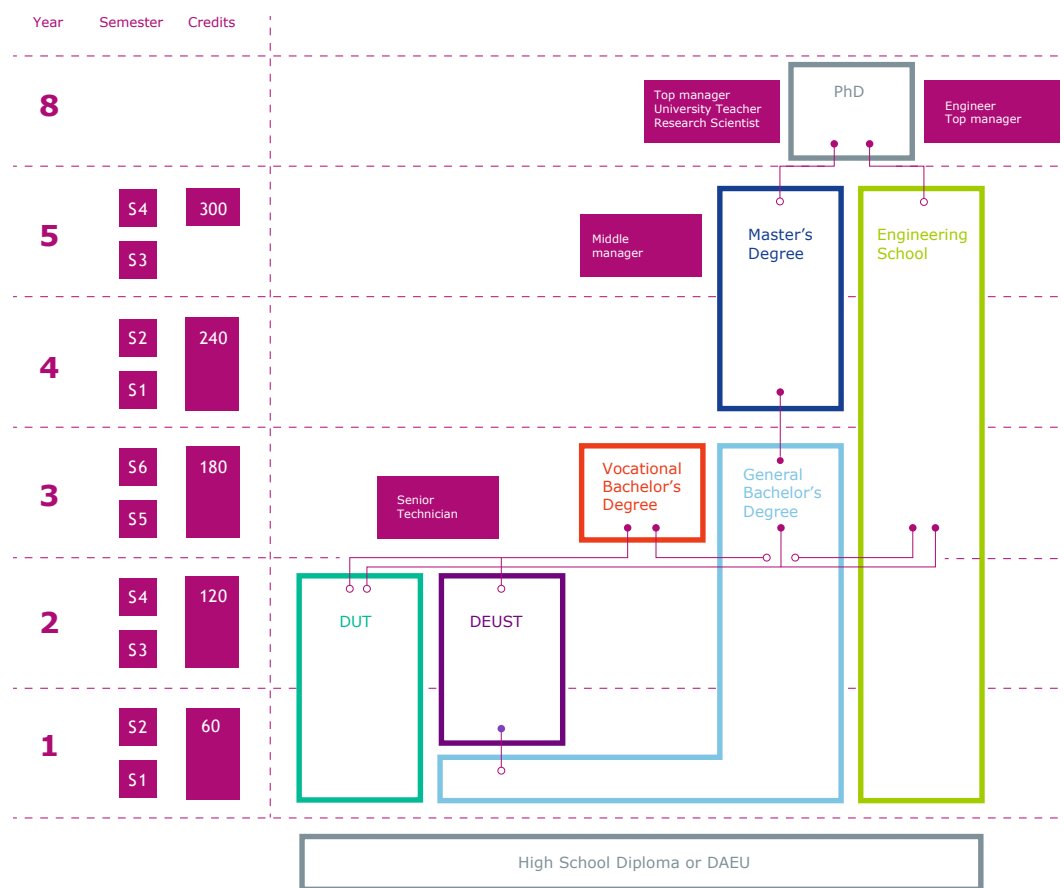
- 4. A gig at "l'Antre 2" on the campus of Health & Law
- 5. Campus of Human & Social Sciences
- 6. Students during Mix'Cité festival



6

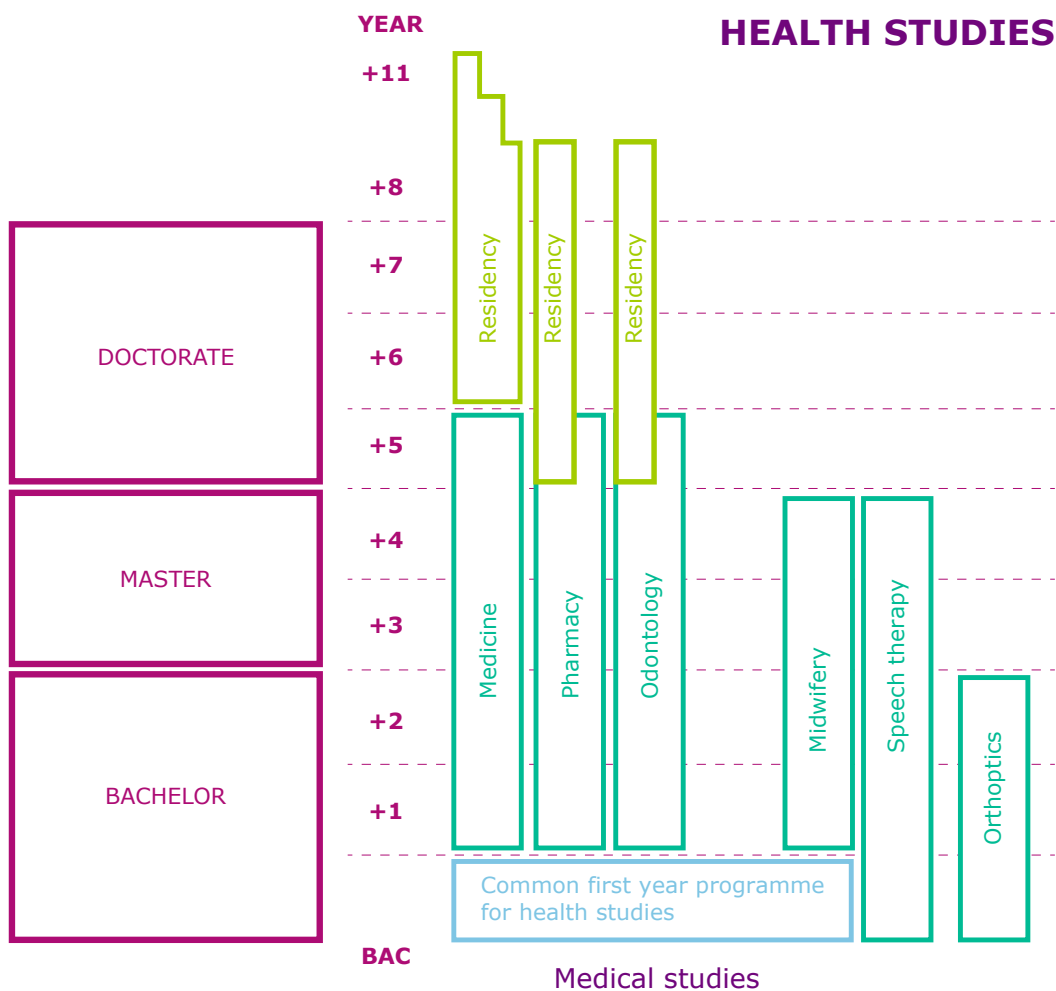
Higher education in France

Lille University has adopted the Bologna process and the courses are organised into three levels: Bachelor, Master and PhD.



PhD programmes are carried out in 6 Graduate Schools:

- Engineering
- Biology/Health
- Economics/Social Sciences/Management
- Materials Science, Radiation and Environment
- Human Sciences
- Law/Politics/Management



Health Care Studies

Medicine – Dental Surgery – Pharmacy - Midwifery:

A highly selective competitive examination is taken at the end of the 1st year common program for medical studies. A *numerus clausus* (pre-determined quota of students) is published each year at the ministerial level giving the total number of students for second year and number for each medical school. Each candidate may sit the first year exams a maximum of two times.

*Students who have begun medical studies in their home country and wish to continue them in France must take the 1st year competitive examination. If they score within the *Numerus Clausus*, they will be placed in the curriculum of French medical studies.*

Specific measures prevail for health students from the EU.

Specialized training courses open to foreign medical professionals

Foreign Internat:

- Competitive examinations by specialty open to non-EU doctors in medicine
- Leads to DES (Diploma of Specialized Medical Studies) but does not give the right to practice medicine in France
- Organized by the French Ministry of Health

DFMS "Diplôme de Formation Médicale Spécialisée":

- Duration: 2 to 4 semesters
- Conditions: Medical professional (non-EU) in the process of becoming a specialist in his/her home country
- Application via Strasbourg University, regardless of the candidate's home country
- Appointment in France as a function of the vacancies in the specialties in the French medical faculties

DFMSA "Diplôme de Formation Médicale Spécialisée Approfondie":

- Duration: 1 to 2 semesters
- Conditions: Medical professional (non-EU) already qualified as a specialist in their home country
- Application via Strasbourg University, regardless of the candidate's home country
- Appointment in France as a function of the vacancies in the specialties in the French medical faculties

Specialized training courses open to foreign medical officers in dentistry

National Degrees:

Advanced Certificates in:

- Surgical Odontology
- Oral Medicine
- Preservative Odontology and Endodontics
- Periodontology

University Degrees:

- Periodontology
- Occlusodontology and functional oral rehabilitation
- Occlusodontology and body balance
- Surgical and prothetical Implantology

Grading scale and academic calendar

Credits Grading scale	Scale at Lille University: 0-20	Percentage of students who earn this grade	Definition
A	14.50 - 20	10%	Excellent outstanding performance with only minor errors
B	12.50 - 14.49	25%	Very good above the average standard but with some errors
C	11 - 12.49	30%	Good generally sound work with a number of notable errors
D	10.50 - 10.99	25%	Satisfactory fair but with significant shortcomings
E	10 - 10.49	10%	Sufficient performance meets the minimum criteria
FX	8 - 9.99	-	Fail some more work required before the credit can be awarded
F	0 - 7.99	-	Fail considerable further work is required

Academic year at Lille University:

1st semester: September to mid-December

1st exam session: Early January

2nd exam session: June

2nd semester: mid-January to mid-May

1st exam session: End of May

2nd exam session: End of June

Degree programmes in English

CAMPUS S&T

SCIENCE, TECHNOLOGY AND HEALTH BACHELOR'S DEGREES

- Life Sciences (bilingual English and French)
- Physical and Analytical Chemistry

MASTER'S DEGREES

- Advanced Spectroscopy in Chemistry - Erasmus Mundus
- Electrical Energy for Sustainable Development
- Urban Engineering and Habitat
- High Performance Computing and Simulation, Advanced Scientific Computing
- Atmospheric Environment (Physics-Chemistry)
- Paleontology-Paleoclimatology
- Plant Sciences
- Translational Neurosciences
- Chemistry, Biorefinery
- Robotics and Transport

ECONOMICS AND MANAGEMENT**BACHELOR'S DEGREES**

- Business Administration (BBA)
- Economics and Management (International Major)

MASTER'S DEGREES

- Executive International Management (MBA)
- Economics of Globalisation and European Integration (Erasmus Mundus)
- Global E-Business
- Management of European Affairs
- Globalization and the World Economy
- Global Sourcing, Purchase & Supply Chain

HUMAN AND SOCIAL SCIENCES**MASTER'S DEGREES**

- Urban Planning/Eurostudies

DATA SCIENCE-COMPUTER SCIENCE**MASTER'S DEGREES**

- Machine Learning and Data Science

PHILOSOPHY**MASTER'S DEGREES**

- Contemporary Philosophy

Degree programmes in French

HEALTH BACHELOR'S DEGREES

DEGREES

Health Sciences

MAJORS

- Engineering in health and environment
Options
 - Health - Environment quality
 - Quality in health and medico-social sectors
 - Biomedical engineering
 - Clinical research
- Biomedical maintenance
- New technologies applied to family care

Health and Social Sciences

- Prevention and public health
- Health – Work environment
- Local management of gerontology and medical-social structures

MASTER'S DEGREES

MAJORS

Biology Health

SPECIALITIES

- Health
- Structure and dynamics of living organisms
- Neurosciences
- Diabetes, obesity and cardiovascular diseases
- Fundamental and clinical oncology
- Approaches in epidemiology and methodologies for health products evaluation
- Immunity, inflammation and infection

Health Engineering

- Health-ergonomics development
- Risk, quality and flow management in health and medical social sectors
- Assessment and management of health, environmental and professional risks
- Healthcare business and clinical research
- Coordination of health trajectories

Sector Management

- Executive in health area
- Management of health and medical-social structures

Drug Sciences

- Industrial pharmaceutical technology
- European and international regulations of health products
- Medical and biomaterials devices: design and evaluation

	<ul style="list-style-type: none"> - Therapeutic optimization: from formulation to clinic - Drugs: design, synthesis, evaluation and selection of chemical entities
Nutrition and Food Science	<ul style="list-style-type: none"> - Food quality and food safety

LAW BACHELOR'S DEGREES

DEGREES

Law

Economic and Social Administration
Political Sciences

MAJORS

- Panoptic law
- European Union legal systems

MASTER'S DEGREES

MAJORS

Economic and Social Administration

Health Law

Business Law

Mention Digital Law

Private Law

Public Law

Social Law

Political Sciences

SPECIALITIES

- Leadership and responsibility in the social field
- Law and economics of human resources

- Law and occupational health management
- French and european law of health products
- Law and health policy
- Expertise areas

- Retailing law
- Industrial property law
- Insurance law
- Tax business law
- Corporate law, legal business management
- Sport law

- Cyberspace law: digital technologies and innovation

- Penal and criminal studies
- Legal and procedural studies
- Private law specialization
- Contract law and debt recovery

- Rights of policies for defence and national security
- Economics of public law
- European Union law
- International criminal justice
- Euro - Lawyers Lille ICP - Saarbrücken – Warwick

- Labour law
- Health rights in the workplace
- Social protection law

- Public communication and participatory democracy
- Project engineering in urban policies
- Management of local authorities
- International solidarity, humanitarian actions and crises
- European Union policies and project management
- Political sciences research

ECONOMICS AND MANAGEMENT BACHELOR'S DEGREES

DEGREES

Management

MAJORS

- Finance and banking
- Accounting
- International finance
- Retail

MASTER'S DEGREES

MAJORS

Accounting - Control - Audit

Finance

Marketing and Sales

SPECIALITIES

- Accounting - Control - Audit
- Financial analysis - International programme
- Finance and banking advanced programme
- Finance and corporate cash
- Business development manager
- Law and Finance
- Distributor marketing
- Online Business
- Retailing management
- International marketing
- Cultural approach to retailing and consumption

SPORTS BACHELOR'S DEGREES

DEGREES

Sciences and Technologies of Physical
Activities and Sports (STAPS)

MAJORS

- Education and motor function
- Adapted physical activity and health
- Sport training
- Sport management

MASTER'S DEGREES

MAJORS

STAPS
Adapted Physical Activity and Health

STAPS
Training and Optimization of Sports Performance

STAPS - Sport Management

SPECIALITIES

- Adapted physical activity and health
- Sport and physical activity sciences
- Sport performance (physical, nutritional and mental aspects)
- Sport and physical activity sciences
- Management and administration of sport and recreation organizations
- Sport and physical activity sciences

HUMAN AND SOCIAL SCIENCES BACHELOR'S DEGREES

DEGREES	MAJORS
Arts	<ul style="list-style-type: none"> - Plastic arts - Performing arts - Film studies - Dance studies - Music and musicology - Visiting musician/tutor - Musician: performance and creation - Professional acting and dramatist course - Dance education
Economy & Management	<ul style="list-style-type: none"> - Organisational management and economy - Quantitative economy and econometrics - Economic sciences and business management
History	<ul style="list-style-type: none"> - History - Administrative studies - Preparatory studies for IEP (Institut d'Études Politiques)
History of Art and Archaeology	<ul style="list-style-type: none"> - History of art and archaeology - History of art - Archaeology
Humanities	<ul style="list-style-type: none"> - History - Modern literature - Philosophy
Information, Communication	<ul style="list-style-type: none"> - Information and documentation sciences - Communication
Foreign and Regional Languages, Literatures and Cultures - LLCER	<ul style="list-style-type: none"> - Arabic, Chinese, Dutch, English, German, Hebrew, Italian, Japanese, Polish, Portuguese, Russian, Scandinavian languages, Spanish
Applied Foreign Languages - LEA	<ul style="list-style-type: none"> - English/Chinese • English/Portuguese - English/Dutch • English/Russian - English/German • English/Spanish - English/Italian • English/Swedish - English/Polish - English/French for specific purposes - Tourism project management - International business techniques
Literature	<ul style="list-style-type: none"> - Modern literature - Classical literature - Humanities and information science - Literature
Mathematics and IT applied to Human and Social Sciences - MIASHS	<ul style="list-style-type: none"> - History-Geography - Mathematics applied to economics - Mathematics, statistics and decision-making in IT - Cognitive science - Language sciences
Philosophy	<ul style="list-style-type: none"> - Philosophy - Philosophy - Sociology
Psychology	<ul style="list-style-type: none"> - Psychology
Language Sciences	<ul style="list-style-type: none"> - Language sciences - French as a foreign language - French sign language - Linguistics (general and IT-based)
Education Science	<ul style="list-style-type: none"> - Education science - Educational practitioners and academic life

Social Science

- Teaching, learning and education
- Social work and health promotion
- Cultural industries, art and societies

Sociology

- History
- Quantitative sociology

PROFESSIONAL DEGREES

DEGREES

Communications Industry

Information Industry: Jobs in Journalism and the Press

Information Industry: Archives, Mediation And Collections

Social Intervention: Support For Specific Populations

Publication Industry: Documentation And Libraries

Land Use Planning and Urban Development

Landscaping and Development: Design, Management and Maintenance

Transport and Distribution Management

MAJORS

- Offline and online communications manager

- Online written press journalism
- Sports journalism

- Management of photographic and audiovisual collections

- Advice on quality of life and ageing

- Management of libraries and documentation
- Management of archived information systems

- Design and governance of sustainable development projects

- Project management

- Public urban and inter-urban transport

TECHNOLOGY DIPLOMA (DUT)

DEGREES

Social Careers

Information/Communication

Logistics and Transport Management

MAJORS

- Socio-cultural programmes
- Specialised education
- Urban management

- Communication in organisations
- Books and heritage industry: book publishing

HUMAN AND SOCIAL SCIENCES MASTER'S DEGREES

DEGREES

Arts

Culture and Communication

Econometrics, Statistics

Business and Market Economy

History

History of Art

Information
Communication

Information/Documentation

Intervention and Social Development

Languages and Societies

SPECIALIST COURSES

- Plastic and visual arts
- Cinema, documents and archives
- Cinema and new images
- Dance/performing arts
- Exhibition/production of contemporary art works
- Music, musicology and contemporary tools
- International course in cinematographic and audiovisual studies
- Contemporary theatre theory and practices

- Cultural, creative and social industries
- Cultural industry, local cultural development and actions
- Cultural industry, artistic and public productions
- Transdisciplinary course: society, information and communication

- Applied econometrics for business

- Economic consulting for businesses

- Archival systems and the world of work
- War and security studies
- Historian
- Transdisciplinary course: Regional administration

- Decorative arts
- Northern art
- Art manufacturing

- Internal and external communication
- Regional communication and development
- HR management and communication
- Communication in public and parapublic organisations
- Journalism for businesses and authorities
- Transdisciplinary course: society, information and communication

- Managing information and documentation in businesses
- Document engineering, publishing, multimedia mediation
- Strategic information intelligence and communication
- Transdisciplinary course: society, information and communication

- Social development strategies
- Social services management
- Sociology of age, health and vulnerability

- Anglo-American studies
- Anglo-Irish studies
- Arabic studies
- Dutch studies
- German studies
- Hebrew studies
- Hispanic studies
- Italian studies
- Japanese studies
- Polish studies
- Portuguese studies
- Russian studies
- Linguistics of foreign languages
- Transdisciplinary course: Regional administration

Applied Foreign Languages	<ul style="list-style-type: none"> - International business and negotiation - Tourism project management - Intercultural relations and international cooperation - International business techniques
Literature	<ul style="list-style-type: none"> - Digital and printed publication of literary texts - Literary studies: creating, understanding, performing - European literature and culture - Children's literature - Transdisciplinary course: Regional administration
Management	<ul style="list-style-type: none"> - Management of educational organisations (Mados) - HR in educational establishments
Intercultural Mediation: Identities, Mobilities, Conflicts	<ul style="list-style-type: none"> - Arts and social responsibility - International - Crises, conflicts and civil society - Migrants: history, stories and social practices - Countries and mobility
Computer Mathematics Applied to Human and Social Sciences	<ul style="list-style-type: none"> - Cognitive science for business - Statistics - Web analysis
Ancient Civilisations	<ul style="list-style-type: none"> - Egypt and the ancient Near East - History, archaeology, literature and anthropology in Greek and Roman civilisations - European prehistory and protohistory - Archaeology industry
Heritage and Museums	<ul style="list-style-type: none"> - Heritage site management
Philosophy	<ul style="list-style-type: none"> - Art aesthetics and philosophy - Ethics, politics and society - History of philosophy and general philosophy - History and philosophy of science, logic and epistemology - Transdisciplinary course: Regional administration
Psychology	<ul style="list-style-type: none"> - Development – education – disability: for individuals and society - Clinical neuropsychology, peri-surgical assessment and cognitive rehabilitation - Clinical psychopathology and analytic psychotherapies - Psychology of neurocognitive processes and affective sciences - Psychology of behaviour and learning - Psychology of work: organisational management, assessment and ergonomics - Psychology and justice - Health psychology and psychopathology - Behavioural and cognitive therapy
Visual Cultures and Science	
Education Science	<ul style="list-style-type: none"> - Analyses, studies and research on educational work and training - Pedagogical systems, teaching and learning - Pedagogical systems, teaching and training of educators - Educational work and development of health, social and educational projects and skills
Language Science	<ul style="list-style-type: none"> - Foreign language pedagogy: English as a modern foreign language - Foreign language pedagogy: French as a foreign language - Foreign language pedagogy: French as a foreign language for the hearing impaired - Foreign language pedagogy: French in the UK - LSF (French sign language)/French - Lexicography and terminography, and corpus data processing - Fundamental and corpus linguistics

SCIENCE, TECHNOLOGY AND HEALTH

BACHELOR'S DEGREES

DEGREES

Chemistry

Automatic Control

Civil Engineering

Information Technology

Mathematics

Mechanics

Physics

Physics, Chemistry

Life Sciences

Earth Sciences

Earth and Life Sciences

Mathematics, Information Technology applied
to Social Sciences

MAJORS

- Chemistry
- Quality and environment of industrial production

- Electronics, electrical systems, automatic control
- Fundamentals (ESEA-F)
- Electrical engineering

- Civil engineering
- Civil engineering - Urban engineering

- Information technology
- IT methods applied to corporate management

- Mathematics

- Mechanical engineering
- Mechanical and engineering sciences

- Physics
- Fundamental physics
- Applied physics

- Physics, chemistry

- Biochemistry
- Cellular biology and physiology
- Biology of organisms and populations
- Bilingual

- Earth sciences

- Earth and life sciences

- Applied mathematics and social sciences

MASTER'S DEGREES

MAJORS

Automatic Control and Electric Systems

Automatic Control, Robotics

Biodiversity, Ecology and Evolution

Plant Biology

Biology-Health

Biotechnologies

High Performance Computing, Simulation

Chemistry

SPECIALITIES

- Electric energy and sustainable development
- Management of electric energy networks
- Systems, autonomous machines and land networks
- Intelligent electric vehicles

- Autonomous robotics and intelligent transport

- Operation and management of marine ecosystems
- Ecology and restoration of damaged environments
- Management and evolution of biodiversity

- Plant Sciences

- Biology-Health

- Cellular and molecular engineering
- Proteomics

- Scientific computing

- Molecular dynamics and reactivity
- Biorefinery
- Catalysis and procedures

	<ul style="list-style-type: none"> - Chemistry and engineering of fomulations - Chemistry of materials for energy and the environment - Polymer systems engineering - Control and optimisation of industrial processes - Chemistry and materials in nuclear industry - Water treatment - Material surfaces treatment - Organic chemistry
Chemistry and Life Sciences	<ul style="list-style-type: none"> - Bioanalytical chemistry - Biorganic chemistry
Physical and Analytical Chemistry	<ul style="list-style-type: none"> - Advanced spectroscopy in chemistry - Atmospheric environment - Sustainable synthesis and catalysis
Civil Engineering	<ul style="list-style-type: none"> - Hydraulic and geotechnical engineering - Geo-Materials and structures in civil engineering - Superstructure in civil engineering - Infrastructure in civil engineering - Urban engineering and habitation - Nanosciences and nanotechnology in civil engineering
Industrial Engineering	<ul style="list-style-type: none"> - Industrial IT - Production maintenance
Mechanical Engineering	<ul style="list-style-type: none"> - Mechanical engineering
Georesources, Georisks, Geotechnique	<ul style="list-style-type: none"> - Geology for engineers
Information Technology	<ul style="list-style-type: none"> - E-services - Image vision interaction - Application infrastructures and software engineering - Complex models, algorithms and data - Information and communications technologies: Infrastructure, integrity & allocation
Mathematics	<ul style="list-style-type: none"> - Applied mathematics - Fundamental mathematics
Applied Mathematics, Statistics	<ul style="list-style-type: none"> - Mathematical engineering - Statistical and digital engineering
Mathematics and Applications	<ul style="list-style-type: none"> - Computational finance - Mathematics of risk and actuarial work
Mechanics	<ul style="list-style-type: none"> - R&D in fluid mechanics - R&D in materials and structures - Energy - Transports
IT methods applied to the Management of Companies	<ul style="list-style-type: none"> - IT project engineering, new technologies
Nutrition and Food Sciences	<ul style="list-style-type: none"> - Management of food quality and marketing of food products - Innovations in plant, enzyme and microbial biotechnologies
Physics	<ul style="list-style-type: none"> - Instrumentation measurement quality - Light - Matter - Biological and medical physics - Structure and properties of condensed matter - Strategic monitoring, intelligence and innovation
Quality, Hygiene, Safety	<ul style="list-style-type: none"> - Integrated management systems in industrial organisations

Networks and Telecommunications

- Communication systems
- Telecommunications

Earth and Planet Sciences, Environment

- Geology of sedimentary basins
- Paleontology - Paleoclimatology

ECONOMICS AND MANAGEMENT BACHELOR'S DEGREES

DEGREES

Economics and Management

MAJORS

- Standard option ENS Cachan preparatory class
- International
- Journalism ESJ Lille
- Economics and social politics
- Economics and society
- Economics and company management
- Economics and international management
- Mathematics, IT, statistics applied to economy and management
- Double degree economics - sociology
- OMC Bridge (Organisation, management, control)
- ISDA Bridge (Information systems and decision aid)
- ITM Bridge (International trade and management)

Management

- Management and administration sciences
- Management and social sciences
- Management and marketing

MASTER'S DEGREES

MAJORS

Accounting, Control, Auditing

Management, Accounting and Organisational Auditing

SPECIALITIES

- Accounting control auditing
- Organisation, management, control
- Management science, internal auditing, control, consulting
- Management Science auditing control finance
- Management Science research and studies in finance and accounting

Applied Economics

- Applied econometrics
- Economic consulting and expertise (C2E)

International Economics

- Cooperation project engineering
- Economics of globalization and European integration (Erasmus mundus)
- Globalization and the world economy (GLOWE)

Public Economics and Management

- Public action, institutions and social and solidarity economics
- Economic development of the public-private interface
- Strategy and management of local & regional authorities

Entrepreneurship and Project Management

- Entrepreneurship innovation management

European Affairs

- Management by projects
- Management of European affairs (MEA)

	- European economics and political affairs
Finance	- Management science - finance and development of companies
Human Resources Management	- Managing human resources
Labour Economics and Human Resources	- Management of human resources
Management	- General management of business units - Management science executive (FC) - Management science research (in management)
Information Systems Management	- Information systems and decision support (data science programme) - Information systems and decision support (business intelligence technical skills training programme) - Information systems and decision support (business intelligence management skills training programme)
Innovation Management	- Management of health and social companies - Spatial planning manager - Culture and development - Entrepreneurial innovation strategy and dynamics
Company Management and Administration	- Management and development of companies - Management and marketing - International executive (course in English) - Management of companies in health sector
Management and International Trade	- Trade and management in international business - Trade and management for East Asia - Intelligence strategy and international competitiveness - New technologies in IT & communications and international management of companies (global e-business, geb)
Strategic Management	- Management and economics of service firms and organisations - Logistics management and engineering of the supply chain - Global sourcing, purchasing, supply chain
Marketing, Sales	- Marketing communication culture - Direct and digital marketing - Marketing - sales and customer relations - Marketing - international business to business and innovation
Currency, Banking, Finance, Insurance	- Retail banking professions
Social Sciences	- Advanced economic and sociological analysis

HUMAN AND SOCIAL SCIENCE BACHELOR'S DEGREES

DEGREES

Geography and Planning

Sociology

Education Sciences

MAJORS

- Geography and town planning
- Spatial planning, environment, town planning
- Journalism ESJ Lille

- Sociology and social policy
- Sociology - Ethnology
- Journalism ESJ Lille

- Adult education
- Education and communication in the sciences

MASTER'S DEGREES

DEGREES

Geography

Scientific and technical Information
and Mediation

Learning Sciences

Sociology
Urban Planning

MAJORS

- Spatial, territorial discontinuities, culture

- Professions in scientific and technical culture
- Journalists and scientists

- Training engineering and research into adult training
- Instructional intervention and research into adult training
- Multimedia instructional design and research into adult training

- Work and Commitment: organisation, mobilisation, association
- Engineering of surveys in the social sciences
- Work organisation, diagnosis and human resources
- Local health practices and policies
- Anthropology of international transformations and regional implications
- Sociology and anthropology of urban issues
- Social and digital networks
- Urban planning and enhancement of heritage sites
- Sustainable construction and urban planning
- Eco-development of territories
- Eurostudies (European studies for territorial and urban development)
- Habitation/Living
- Sciences of the city, the environment and territories
- City and projects

The Bachelor's degree is mainly viewed as a professional degree. Given the system of earning credits and the two-semester system, the three-year programme can be broken down to modules or completed in a shorter time. Every student who has completed a Bachelor's degree is eligible to continue on to a Master's degree programme. An MA programme provides more in-depth study of a specialisation in a given discipline.

PHD

GRADUATE SCHOOLS

Graduate School of Sciences of Matter,
the Radiation and Environment (ED PMSE)

FIELD OF STUDY

- Physics
- Chemistry
- Earth and life sciences
- Earth and universe
- Environment
- Agri-biotechnology

Graduate School of Engineering Sciences
(ED SPI)

- Automation, computer sciences engineering,
signal and image processing
- Electrical engineering
- Computer science
- Mechanics, civil engineering, energy
and materials
- Micro and nano technologies, acoustics
and telecommunications
- Pure mathematics and applied mathematics

Graduate School of Human and Social
Sciences (ED SHS)

- Philosophy, philology
- Language and arts
- Prehistory, archaeology, history
and history of art
- Languages, literatures and cultures
- Behavioral and cognitive psychology
- Information/communication, learning sciences

Graduate School of Biology and Health
(ED BSL)

- Molecular and cellular aspects of biology
- Physiology
- Organic biology
- Public health
- Clinical research
- Technological innovation
- Biomolecules
- Pharmacology
- Therapy

Graduate School of Economics, Social, Urban
Planning and Management (ED SESAM)

- Development
- Economy
- Management
- Sociology
- Sport and physical activity
- Geography
- Anthropology

Graduate School of Legal Science, Policy and
Management (ED SJPG)

- Private law
- Public law
- Legal history
- Political sciences
- Management sciences

The decision to do a Doctorate should be made early on the Master's degree programme. The three years of a Doctorate are entirely devoted to research and writing the thesis.

Admission

Admissions requirements

If you wish to apply for a study programme in English, please check the requirements for each programme on our website or download our booklet "Degree programmes in English". Students whose first language is not French should provide proof of French proficiency when applying for a study programme in French. The required level is B2 of the Common European Framework of Reference for Languages

Exchange students and degree-seekers from partner universities:

Contact your home institution's International Relations Office for information on the application process.

Free movers:

Free movers are applicants who are not participating in an exchange programme. You first need to determine whether your country has a Campus France agency.

If so, you need to follow the Campus France procedure (online application process starting on 15 November).

If not, you need to follow our admissions process to apply (online application process). Please be aware that, depending on the study year you wish to register for, application deadlines may differ. Contact the relevant campus for more information.

Enrolment

In order to register at Lille University you will need to provide the following documents:

- your passport and student visa
- 5 passport photographs
- your diplomas and transcripts
- a birth certificate translated into French or English and certified by the French Embassy
- if you are a free-mover, you need to provide a document called "attestation de pré-inscription" issued by Campus France or the "décision de validation" issued by Lille University if there is no Campus France agency in your country

Specific documents requested for exchange students:

- the registration certificate from your home university
- your learning agreement

Fees

Lille University is a public university, this means that it is funded by the French government. That's why tuition fees are low:

- Bachelor's degree: approximately 190 € per year
- Master's degree: approximately 265 € per year
- PhD: approximately 400 € per year

As exchange students are already registered in their home institution, they will benefit from a tuition waiver.

Please note that you will have to pay for Health insurance (Student Social Security) if you are a non-EU citizen and under 28 years of age. The annual fee is approximately 215 €.

Financial support and scholarships

Exchange students can benefit from scholarships if they are applying via a specific mobility programme such as Erasmus +. Scholarships (Eiffel grants) are also awarded by the French Ministry of Foreign Affairs to the best international students following recommendation from host universities.

For free movers, some French Embassies may also award grants under specific conditions.

For more information, contact the French Embassy in your country.

If your country has a Campus France agency, an online grant search engine is available.

Health

EU students:

please bring your European insurance card.

Non-EU students under 28 years old:

enrolment in the student social security programme is mandatory. You must fill in the registration form when you enrol at the university and pay the registration fees (around 215 €/year).

You will have to choose a social security payment centre for the reimbursement of any social benefits: SMENO or LMDE.

Student Social Security will not cover 100% of your medical costs. To be fully covered, you are strongly encouraged to enrol in a supplementary healthcare programme called a "mutuelle".

The university health centre SIUMPPS ("Service InterUniversitaire de Médecine Préventive et de Promotion de la Santé") is a free public service integrated within the university. This centre can give you basic health care as well as medical and psychological counselling. Services available: nursing care, doctor's appointments, vaccinations, social and psychological counselling, family planning and education; 1st year students: a medical check-up, medical certificates: fitness for sport, etc.

Visas and immigration

European citizens do not need to ask for a residency permit.

For non-EU students and for any stay over 3 months in duration, a type D visa is required to study in France. This one-year visa is issued by French embassies/consulates and cannot be applied for in France. You will therefore need to **complete all necessary procedures before travelling**.

The French Embassy/Consulate will also give you a document called "Attestation OFII".

Within 3 months of your arrival, you will need to fill in this document with your address in France and add a copy of your passport and visa with your entry stamp.

You will have to send it to the OFII (French Office of Immigration). The OFII will call you for a compulsory medical examination and will validate your visa upon payment of a tax. This one-year visa will exempt you from applying for a residency permit.

If you study in France for more than one academic year, you will need to apply for a residency permit 2 months before the expiry of your one-year visa. Assistance is provided on each campus to enable students to get their paperwork in order, complete all formalities and ask any questions. Applications must be submitted in person, by appointment only, which takes around 20 minutes.

International policy

Lille University has the goal of becoming a leading European university, recognized worldwide for its research, the excellence of its teaching and its innovation regarding lifelong training and to become even more attractive to international students and researchers. To achieve this goal, Lille University has set up a specific policy of international openness. Concretely, Lille University's plan is to:

- Benefit from its privileged geographic position in the heart of European academic and scientific excellence
- Develop strategic, targeted cooperation
- Develop education and scientific engineering
- Improve the quality the welcome of international students & staff
- Increase the number of outgoing students who study abroad

Exchange programmes

Lille University relies on the International Relations Office to implement its international policy. Lille University has established formal exchange agreements with a number of universities in Europe, Asia, Africa, Australia, the Middle East and the Americas. These agreements are designed both for international students who wish to spend one or two semesters in a study programme at Lille University and transfer the credits to their home institution (Erasmus+ for instance), as well as for students who want to study at and earn a diploma from Lille University.

The International Relations Office provides a link between your home university and Lille University. Staff are available to provide assistance before, during and after your stay. The International Relations Office coordinates the application process as well as the orientation programme and should be your first contact point for all enquiries.

Prospective students who may need advice should contact the International Relations Office of their home institution or email:

- **Campus of Health & Law**
rilille@univ-lille2.fr
- **Campus of Human & Social Sciences**
incoming@univ-lille3.fr (exchange students)
baei@univ-lille3.fr (free movers)
- **Campus of Science & Technology**
international@univ-lille1.fr

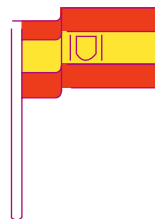
Further information may be obtained from the website of the International Relations Office:

- **Campus of Health & Law**
www.univ-lille2.fr/international.html
- **Campus of Human & Social Sciences**
www.univ-lille3.fr/international
- **Campus of Science & Technology**
ci.univ-lille1.fr

Testimonies

Ignacio Sancho Ledesma

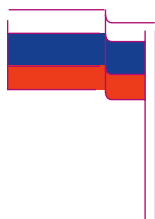
Spain



"Lille is a great place to experience Erasmus. It is a small city that can be visited by bike or walking. It also has 2 metro lines that cover almost the whole city, apart from several bus lines. My favorite way of transport though are bicycles, which you can rent for less than 20 €/month.

One of the reasons why I chose Lille, and definitely has been the correct choice, is due to its location: it connects Paris, Brussels and London in an hour, so it's a rather good place to live if you want to experience Erasmus at its whole. Lille also has lots of activities for students, and it is not especially expensive as other cities in France might be.

In definitive, I strongly recommend Lille for an Erasmus exchange. Come and experience a new place where lots of cultures and students from different nationalities live, and create memories that will last for a lifetime!"



Dinara Dikhanbayeva

Russia

"I was trained for one year at Lille University, Science & Technology in a group with 33 people, who were nearly from 20 different countries. And it was the most friendly group of all to whom I have met. At the beginning of any new business there is always unknown fear that's I very good know, but very soon all the fears will dispel because of friendly people, the beauty of the city, new emotions and impressions. You will find many wonderful friends from all over the world in spite of the age difference, different religious beliefs and political views. You will begin to better understand the world and see its immensity. A whole year of training in Lille gave me tremendous experience, incredible adventures and most importantly, many friends from around the world. Being an exchange student is great, so enjoy travel, study hard and be ready to expand the boundaries of your mind!"

Arelis Ardiles

Venezuela



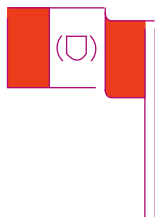
"I always wanted to study abroad and I'm glad to be at Lille University, Human and Social Sciences. At first, I applied everywhere in France however I have many friends in Lille so coming here made me pleasure.

I came 2 or 3 times before and I find that Lille is an amazing city with a special charm that I couldn't describe. I feel at home, the "Lillois" are very welcoming and there are international students everywhere, so I never feel alone.

Besides, I love my master, the quality of French education system is incredible and this experience helped me to meet people from all over the country and the continent; an opportunity very rewarding. This master gave me the tools to grow professionally and personally knowing that I'm able to overcome my fears and go beyond my limits! If I have to choose again where to go, I will come to Lille!"

Rosa Luz Vera

Peru



"I am in the final year of Dentistry at the Catholic University of Santa María Arequipa, in Peru. Thanks to bilateral relations between my university and Lille University in France, I had the opportunity to participate in an exchange, where I learned a lot of things related to my career; I met new people and shared many experiences as well. I would invite other students to participate in these programs, because it will be one of the best experiences of your personal and professional life."

Learn more

Campus of Health & Law

www.univ-lille2.fr

www.facebook.com/universitelille2droitetsante

Campus of Human & Social Sciences

www.univ-lille3.fr

www.facebook.com/Universite.Lille3

Campus of Science & Technology

www.univ-lille1.fr

www.facebook.com/univlille1

The City of Lille

en.lilletourism.com

www.northernfrance-tourism.com

Transport

www.transpole.fr

www.vlille.fr

Accommodation

www.crous-lille.fr/logements

reeflex.univ-lille.fr/home/International-Student/Apartment

Cafeterias

www.crous-lille.fr/restauration

Library

Campus of Health & Law:

scd.univ-lille2.fr

Campus of Human & Social Sciences:

www.univ-lille3.fr/bibliotheques

Campus of Science & Technology:

doc.univ-lille1.fr

Services for students with disabilities

Campus of Health & Law:

www.univ-lille2.fr/vie-etudiante/le-service-handicap-pole-etudiant.html

Campus of Human & Social Sciences:

www.univ-lille3.fr/campus/accessibilite

Campus of Science & Technology:

www.univ-lille1.fr/campus/Handicap

Student Clubs

Erasmus Student Network:

www.esnlille.fr/satellite

Student Club Day :

journeedesassociations.univ-lille2.fr

Ulysse :

www.facebook.com/UlysseLille3

French Language

Maison des Langues:

www-langues.univ-lille1.fr/co/001_maison_des_langues.html

DEFI:

www.univ-lille3/defi/, defi@univ-lille3.fr

www.facebook.com/DEFI.Lille3

DU FLE:

www.univ-lille1.fr/digitalAssets/45/45746_French_for_foreigners_V2015.pdf

Certificates in French Language:

www.cue-lillenorddefrance.fr

French-Dutch Network

christiaan.seemann@univ-lille3.fr

www.frn1.eu

Sports

Campus of Health & Law:

scaps.univ-lille2.fr

Campus of Human & Social Sciences:

www.univ-lille3.fr/campus/sport

Campus of Science & Technology:

suaps.univ-lille1.fr

Culture

Campus of Health & Law:

www.univ-lille2.fr/culture.html

Campus of Human & Social Sciences:

www.univ-lille3.fr/culture

Campus of Science & Technology:

culture.univ-lille1.fr/accueil.html

Music

www.oulille.com

Research

www.univ-lille.fr/recherche

doc.univ-lille1.fr/LILLIAD/Xperium

recherche.univ-lille2.fr

www.univ-lille3.fr/recherche/

Degree Programmes In English

www.univ-lille1.fr/home/International

Admission

europass.cedefop.europa.eu/en/resources

european-language-levels-cefr

www.campusfrance.org/en

Scholarships

campusbourses.campusfrance.org/fria/bourse/#/catalog

www.campusfrance.org/en/EIFFel

Health

www.smeno.com/foreign-student.html

www.lmde.fr

ec.europa.eu/social/main.jsp?catId=563

Visa-Immigration

www.ofii.fr/default.php3

Campus of Human & Social Sciences:

titre-sejour@univ-lille3.fr

International Relations Office

Campus of Health & Law:

rillille@univ-lille2.fr

www.facebook.com/groups/rilille2

Campus of Human & Social Sciences:

- exchange students: incoming@univ-lille3.fr


- free movers: baei@univ-lille3.fr

www.facebook.com/internationallille3shs

Campus of Science & Technology:

international@univ-lille1.fr

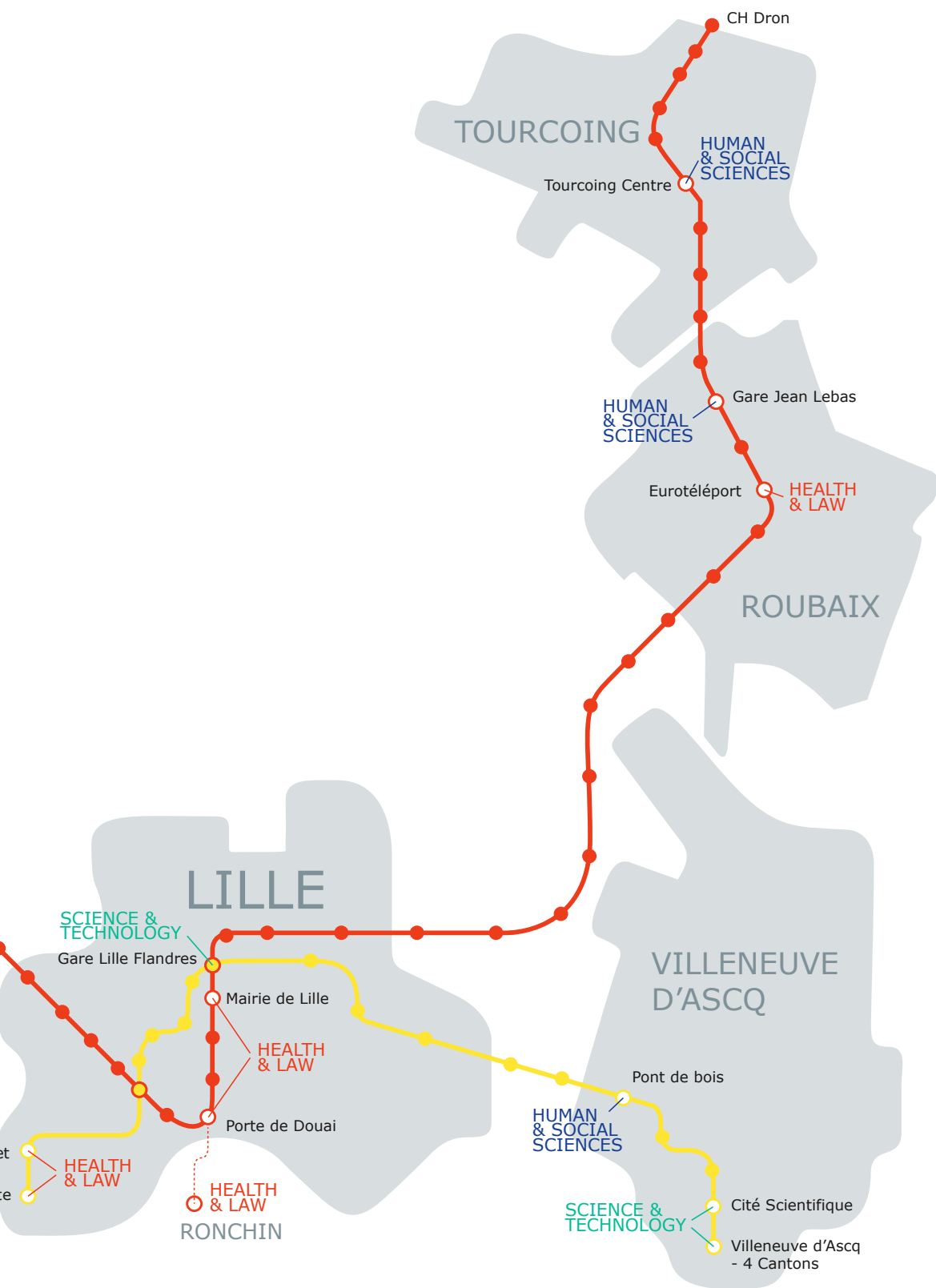
How to move
between the campuses
of Lille University
by metro?

Line 1 
Line 2 

Lomme
Saint-Philibert

CHR Oscar Lamb

CHR B-Calmett



Notes

Handwriting practice lines consisting of multiple sets of three horizontal dashed lines for tracing and writing practice.

- 
1. "Palais des Beaux-Arts"
 2. The Lille Opera House
 3. Inside "Lille Flandres" train station



1



2



3



Campus Health & Law
www.univ-lille2.fr

Campus Human & Social Sciences
www.univ-lille3.fr

Campus Science & Technology
www.univ-lille1.fr
