

Fact Sheet

Study Abroad

2019-20



Contacts:

Becky Kidner, Study Abroad Officer
Leeds University Business School
Maurice Keyworth Building
University of Leeds
Leeds, LS2 9JT, UK

Email: studyabroad@lubs.leeds.ac.uk

Website: <http://business.leeds.ac.uk/>

World Ranked – Triple Accredited – Award Winning



Application Procedures

Application Deadlines

September (Semester 1) start:

- ◆ Worldwide exchange & fee-paying study abroad students – **31st March**
- ◆ Erasmus students – **15th April**

January (Semester 2) start:

- ◆ All students – **31st October**

The following documents should be uploaded as part of the online application form:

All Applicants:

- ◆ An official transcript of records from the student's home university (in English)
- ◆ Description of the grading system at the home university
- ◆ A copy of the information page of applicants passport or ID card

If necessary

- ◆ A copy of any English language certificates iTOEFL/IELTS)

Further information about applying to Leeds can be found on the Study Abroad Office website:

https://www.leeds.ac.uk/info/130117/exchange_and_study_abroad/118/applying

Language Requirements

If the student is a non-native speaker of English we have minimum language requirements as follows:

Name of Programme	Month of Entry	TOEFL (iBT)	IELTS
Direct entry into Semester 1 or 2	Sept/Jan	92 (Overall) 21 (L & R), 22 (S & W)	6.5 (Overall) 6.0 (L, R, S & W)

Please see our Language Requirements web page for further details: https://www.leeds.ac.uk/info/130117/exchange_and_study_abroad/119/language_requirements

Accommodation

Accommodation is guaranteed to all Study Abroad and Exchange students who apply before the deadline:

Semester 1 start—**1st July**

Semester 2 start—**1st December**

Students can apply for accommodation from mid-May, only after being formally accepted by the University to study here. Students can choose from dormitories and flats, catered or non-catered and there is some limited opportunity for home stay.

For further details, please see: <http://accommodation.leeds.ac.uk/>

There are also many off-campus opportunities, as Leeds has no shortage of private student accommodation. Unipol is one of the safest places to start looking, due to its affiliations with the University: <https://www.unipol.org.uk/leeds/accommodation#>



**Pre-sessional
Language Courses**

The Language Centre at the University of Leeds offers English Language courses that start in April, July and August in any given year. The programme a student should follow is dependant on their current IELTS score. Please see the table below for guidelines:

Name of Programme	Month of Entry	IELTS
20 week Academic English for undergraduate studies	April	5.5 (Overall) No components below 5.0 (L, R, S & W)
10-week Academic English for undergraduate studies	July or October	6.0 (Overall) Two components below 6.0 (L, R, S & W) No scores below 5.5 (L, R, S & W)
6-week English Language Programme (Term 4b)	August	6.0 (Overall) One component below 6.0 (L, R, S & W) No scores below 5.5 (L, R, S & W)

All language tuition takes place at the Language Centre, which has modern language laboratories, excellent fully equipped classrooms, group TV/video areas and a laboratory for computer-based learning.

TOEFL: students that do not meet the minimum TOEFL scores for direct entry can no longer be accepted for pre-sessional programmes.

For further information about the English language courses, please visit:
http://www.leeds.ac.uk/arts/info/125008/english_language/1768/courses/3

**Study areas restricted
for Exchange students**

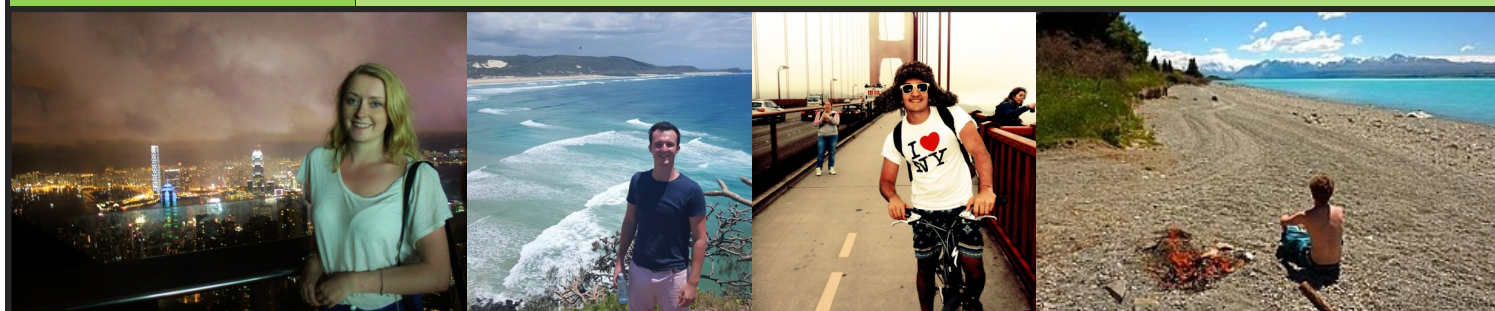
- Medical and Dentistry Courses are not available to exchange students.
- Early application is recommended for Business students and also any students wishing to take classes in the following schools: Communication Studies, English, History, Law, Politics, Sociology & Social Policy and the Foreign Language Teaching Unit.
- Students need to ensure they meet any pre-requisite requirements for modules they wish to take.
- We would also advise students to read the guidance on choosing modules available on our website:
https://www.leeds.ac.uk/info/130117/exchange_and_study_abroad/117/what_can_i_study

**Course Module
Catalogue**

<http://webprod3.leeds.ac.uk/catalogue/modulesearch.asp?T=S&L=UG>
Tick the box which says 'Search by incoming study abroad'.

**Online Module
Timetable**

The module timetable usually updates at the beginning of May for the upcoming year. You may have to submit your application based on the previous year's catalogue and unfortunately, we cannot guarantee all modules shown for the previous year will be running in your year of study, or in some cases the same semester.



Full-time Academic Load	60 credits per semester is a full time course load. Students are permitted to enrol on a minimum of 50 or maximum of 70 credits per semester																																					
Student Time	A student is expected to put in 100 hours of work for each 10 credits they take, this includes formal contact time in the classroom (lectures / seminars), and self-study (reading etc.)																																					
Weeks per semester	11																																					
Recommended Grade Conversions	<table><tr><th>Mark</th><th>Recommended US Grade</th></tr><tr><td>70-100</td><td>A</td></tr><tr><td>68-69</td><td>A-</td></tr><tr><td>63-67</td><td>B+</td></tr><tr><td>58-62</td><td>B</td></tr><tr><td>53-57</td><td>B-</td></tr><tr><td>50-52</td><td>C+</td></tr><tr><td>45-49</td><td>C</td></tr><tr><td>40-44</td><td>C-</td></tr><tr><td>0-39</td><td>Fail</td></tr></table> <table><tr><th>Mark</th><th>Recommended ECTS Grade</th></tr><tr><td>70-100</td><td>A</td></tr><tr><td>60-69</td><td>B</td></tr><tr><td>50-59</td><td>C</td></tr><tr><td>41-49</td><td>D</td></tr><tr><td>40</td><td>E</td></tr><tr><td>0-39</td><td>F</td></tr></table> <p>These grade conversion scales are guidelines, and are to be used at the discretion of the awarding institution. They are by way of recommendation only and do not represent official grading scales of the University of Leeds.</p>				Mark	Recommended US Grade	70-100	A	68-69	A-	63-67	B+	58-62	B	53-57	B-	50-52	C+	45-49	C	40-44	C-	0-39	Fail	Mark	Recommended ECTS Grade	70-100	A	60-69	B	50-59	C	41-49	D	40	E	0-39	F
Mark	Recommended US Grade																																					
70-100	A																																					
68-69	A-																																					
63-67	B+																																					
58-62	B																																					
53-57	B-																																					
50-52	C+																																					
45-49	C																																					
40-44	C-																																					
0-39	Fail																																					
Mark	Recommended ECTS Grade																																					
70-100	A																																					
60-69	B																																					
50-59	C																																					
41-49	D																																					
40	E																																					
0-39	F																																					
When are transcripts released?	Official transcripts are released in July. For more information please see: http://www.leeds.ac.uk/info/130117/exchange_and_study_abroad/149/exams_and_transcripts																																					
Pre-enrolment onto Modules	<ul style="list-style-type: none">Students choose modules during their online application.Once supporting documents have been received, applications are forwarded to the relevant schools (from mid-May onwards) who will decide on the student’s suitability onto the course.If students are not accepted for all their choices they will be given the opportunity to select new modules when they receive their ‘Programme of Study Confirmation’ from the Study Abroad Office.Module changes may not always be possible after the student has received their Programme of Study Confirmation email, and so choices should be made very carefully on application.																																					
Registration Process	Students are expected to register online prior to arrival (although facilities are available to do this upon arrival). Students will be sent registration instructions when the registration system goes live (August for Semester 1 start and December for Semester 2 start).																																					
Length of Stay	Minimum stay one semester; maximum stay one year.																																					



Academic Calendar 2019/20

Semester 1

Recommended Date of Arrival	14th - 15th September 2019
International Welcome Week	16th - 22nd September 2019
Compulsory Orientation Sessions*	23rd - 27th September 2019
Intro 'Freshers' Week (for all new students)	23rd - 27th September 2019
Start of Teaching	30th September 2019
End of Teaching	13th December 2019
Christmas Holiday	14th December 2019 - 12th January 2020
Examinations Period**	13th - 24th January 2020
End of Semester 1	24th January 2020

Semester 2

Recommended Date of Arrival	22nd - 23rd January 2020
Welcome Programme & Compulsory Orientations*	24th January 2020
Start of Teaching	27th January 2020
Easter Holiday (no teaching)	28th March - 26th April 2020
Teaching Ends	8th May 2020
Examinations Period**	18th May - 5th June 2020
Official End of Semester 2***	19th June 2020

For more information and up to date information on term dates, please see: [University of Leeds Almanac](#)

*Leeds University Business School holds a separate orientation meeting for departmental exchange students in September and January during the Welcome Programme weeks.

**All students are generally expected to attend their exams on the University of Leeds campus. However, if your exams clash with when you are required to be back at your Home University you can [apply to sit your exams at your Home University](#).

***Exam results will be externally moderated in June. Students are advised to remain within travelling distance during this time in case of any anomalies in relation to their exams. Resits take place in August



Estimated Expenses per Semester

Living Expenses	<p>Leeds has fairly low living costs compared to London and the South of England. Here follows some estimated costs to help you work out a budget.</p> <p>http://www.leeds.ac.uk/info/128004/fees_and_costs/29/living_expenses</p>
Transportation	<ul style="list-style-type: none"> Monthly bus pass for students = £45 (approximately) Depending on where the chosen accommodation is located, students could walk/cycle to the University or to the city.

Fees and Other

Other Fees	There are no additional administration fees for students to pay on arrival.
Welcome Programme	https://students.leeds.ac.uk/info/21503/welcome_and_arrival/708/international_orientation_programme_and_key_dates
Travel & Arrival	http://www.leeds.ac.uk/info/130113/preparing_for_leeds/112/arriving

Health Information

Health Insurance	<p>Leeds has no compulsory health insurance policy. Private insurance is, however, recommended if students will be studying for less than 6 months.</p>
National Health Service (NHS)	<p>The NHS is publicly funded and includes services provided by family doctors (general practitioners); specialists; hospitals; dentists; the ambulance service and opticians. Some NHS services are free to everyone, some are subsidised and there are some services for which you will have to pay the full cost.</p> <p>If you are going to do a course which lasts more than six months, the treatment for you under the NHS will be free or will be subsidised.</p> <p>If you are in the UK to do a course which lasts less than six months you need to obtain medical insurance for yourself unless your home country has a reciprocal health agreement with the UK. We recommend this is done before coming to the UK. The Welfare Services Office has a list of these countries. If you have not done so you should contact an insurance broker - you will find a list in the Yellow Pages Telephone Directory, after arrival.</p> <p>The following NHS treatments are free to everyone:</p> <ul style="list-style-type: none"> Treatment in accident and emergency departments (but not once patients are admitted to hospital, unless you are in a coma lasting longer than 6 months). Diagnosis and treatment of some communicable diseases. Compulsory psychiatric treatment. Contraceptive Services. Midwifery, district nursing and health visitor services. Treatment for HIV/AIDS and other sexually transmitted diseases <p>For more information please visit the Leeds University Health and Welfare Services site https://students.leeds.ac.uk/info/100003/look_after_yourself_and_others/746/health_care or refer to this UKCISA webpage: http://www.ukcisa.org.uk/Information--Advice/Living-in-the-UK/Health-and-healthcare</p>

Other information

LUBS Buddy Scheme

Starting in 2015-16 we introduced an undergraduate Study Abroad buddy scheme to help incoming students settle in to life at the Business School (LUBS). Student volunteers who have either been on a year abroad, or been placed on study abroad for the next academic year act as buddies to incoming students.

Clubs and Societies

Leeds University have one of the biggest and best Student Unions in the UK, one of the benefits of this is the number of clubs and societies students can join (over 300!). LUBS also has specific societies relating to Business subjects, such as the Banking and Finance Society, Trading and Investment society and general 'LUBSOC' (LUBS Society) who hold a number of events through the year. For more information about clubs and societies and to find out more about the Union, please visit:

<https://www.luu.org.uk/>

Student Experiences

Feedback from Incoming students in the Business School



"It has been a **lot of fun!** I have made a lot of new international friends and have learned a lot about myself as a person. It's been one of my **best** semesters at Uni!"

Joanna - Lund University, Sweden

"I **loved** this experience and would do it again in a heartbeat. If given the opportunity, everyone should spend time abroad. For me, I feel so much more **mature** and well-rounded"

Sammy - University of Minnesota, USA



"My time at Leeds University has allowed me to get out of my comfort zone, and **learn** and **grow** as an individual. An experience I would **recommend to everyone**".

Cody - University of Manitoba, Canada